

# Update Notice: Work on Wormwood Scrubs

February 2021 | [www.hs2.org.uk](http://www.hs2.org.uk)

High Speed Two (HS2) is the new high speed railway for Britain.

We are continually reviewing the works on our construction sites in line with Government and Public Health England (PHE) advice on dealing with COVID-19. The Government's current strategy makes it clear that construction activity can continue as long as it complies with this guidance. Please be assured that only sites that can operate within the guidelines are operational. All sites will remain under constant review.

To help build the new HS2 Old Oak Common railway station, an existing sewer and utility supplies need to be moved. Parts of these services will be diverted through a section of Wormwood Scrubs. Details about the planned works on Wormwood Scrubs including previous notification letters and frequently asked questions can be found on our website <https://hs2inoldoak.commonplace.is/>.

HS2 have been working closely with both London Borough of Hammersmith & Fulham (LBHF) and Old Oak and Park Royal Development Corporation (OPDC) on developing the access route for the sewer diversion work. LBHF have now submitted their planning application to OPDC for the alternative access via Old Oak Common Lane. While a decision on the access route is pending, LBHF have agreed we can temporarily access the Scrubs to prepare the site including in the HS2 Act via the existing maintenance access route on Braybrook Street. This work will begin 15 February 2021 and continue for approximately one month. Further details of this work including a map labelled site A and Site B showing our work areas and the location of the existing maintenance access route are included on the next page.

**If you have a question about HS2 or our works, please contact our HS2 Helpdesk team on 08081 434 434 or email [hs2enquiries@hs2.org.uk](mailto:hs2enquiries@hs2.org.uk)**

## Notification



### Duration of works

From 15 February 2021 for approximately one month

Site preparation works from 8am to 6pm Mondays to Fridays and 8am to 1pm on Saturdays

### What to expect

Installation of fencing around site areas in the Wormwood Scrubs

Vegetation clearance works within the site areas under the direction of an ecologist

### What we will do

Pre-works inspections will be completed by an ecologist, and all works will be completed under the direction of an ecologist

# Update Notice: Work on Wormwood Scrubs

Notification



[www.hs2.org.uk](http://www.hs2.org.uk)

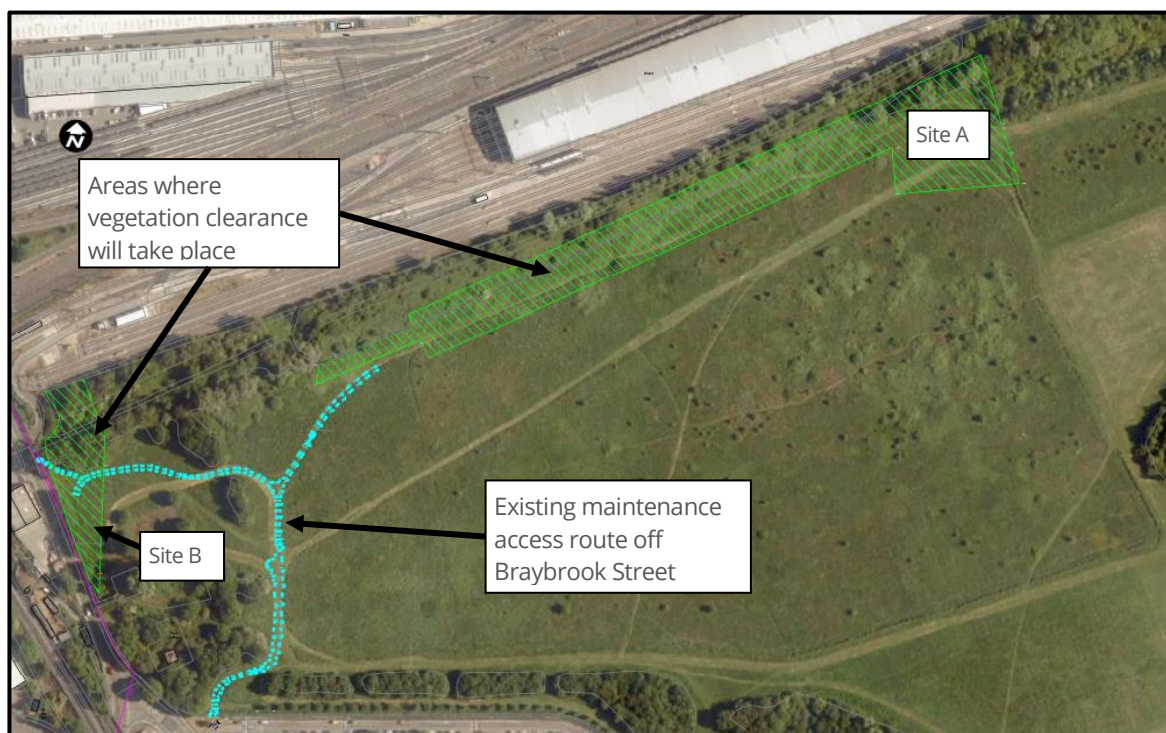
## Preparing the site for works

From 15 February 2021, we will be clearing vegetation on the two site areas required for the Stamford Brook Sewer diversion works, and the Undertrack Crossing utilities works on Wormwood scrubs. These work areas are shown on the map below, labelled site A and Site B. This will involve removing all trees and shrubs where required within these two site areas, and trimming the grass to ground level, only after ecological monitoring and allowing any reptiles to relocate in the appropriate season.

Our ecologists have been completing pre-work inspections of the site areas and the existing maintenance route off Braybrook Street in advance of the works starting. All works will be carried out under a watching brief by an ecologist. Vegetation such as scrub and trees will be removed initially, outside of bird nesting season as much as possible. In areas where reptiles are likely to be present, vegetation will be removed in stages to allow any reptiles present to move away from the work areas into suitable adjacent habitat. Removal of features suitable for hibernating reptiles will be left until later in the year when reptiles are no longer hibernating before being cleared to ground level.

Fencing will be installed around the perimeter of Site A and Site B. Both the sewer and utility work sites will be accessed from the existing LBHF maintenance route off Braybrook Street. We may also put some additional localised safety fencing in places along the boundary of Site A, in areas of dense vegetation, while we construct the perimeter fence.

The vehicles attending the site will be no larger than those used by LBHF for routine maintenance work. A protective matting will be placed on the maintenance route to further limit the impact on the ground.



# What else is happening in your area?

[www.hs2.org.uk](http://www.hs2.org.uk)

## Contact our new HS2 Helpdesk team

Our new Helpdesk team is based in our Head Office in Birmingham. This is so that we can provide you with the best service possible. Our team is here to listen and respond to your enquiry, complaint or feedback to help us be a good neighbour.

You can contact our Helpdesk team all day, every day of the year on:

Freephone: **08081 434 434**

Minicom: **08081 456 472**

Email: [hs2enquiries@hs2.org.uk](mailto:hs2enquiries@hs2.org.uk)

## Keep up-to-date with your local community website

To find out more about what's happening in your area and receive regular email updates, you can sign up to our local community websites at: [www.hs2inyourarea.co.uk](http://www.hs2inyourarea.co.uk).

## About our Community and Business Funds

We are offering two funds that are available to local communities and businesses between the West Midlands and London, to help with the disruption caused by our construction work. These are the Community and Environment Fund (CEF) and the Business and Local Economy Fund (BLEF).

The CEF is designed to give communities the opportunity to share in the benefits of HS2. It is an allocated fund that communities are able to apply for, to help to support local projects that aim to improve their local area.

The BLEF is designed to support local economies that may be disrupted by the construction of HS2. BLEF grants are for local business support organisations and local authorities to help maintain business activity in local communities.

For more information about each of these funds, including how to apply, please visit: <https://www.groundwork.org.uk/hs2funds>



# Keeping you informed

We are committed to keeping you informed about work on HS2. This includes ensuring you know what to expect and when to expect it, as well as how we can help.

## Residents' Charter and Commissioner

The Residents' Charter is our promise to communicate as clearly as we possibly can with people who live along or near the HS2 route.  
[www.gov.uk/government/publications/hs2-residents-charter](http://www.gov.uk/government/publications/hs2-residents-charter)

We also have an independent Residents' Commissioner whose job is to make sure we keep to the promises we make in the Charter and to keep it under constant review. Find reports at:  
[www.gov.uk/government/collections/hs2-ltd-residents-commissioner](http://www.gov.uk/government/collections/hs2-ltd-residents-commissioner)

You can contact the Commissioner at:  
[residentscommissioner@hs2.org.uk](mailto:residentscommissioner@hs2.org.uk)

## Construction Commissioner

The Construction Commissioner's role is to mediate and monitor the way in which HS2 Ltd manages and responds to construction complaints. You can contact the Construction Commissioner by emailing:  
[complaints@hs2-cc.org.uk](mailto:complaints@hs2-cc.org.uk)

## Property and compensation

You can find out all about HS2 and properties along the line of route by visiting:  
[www.gov.uk/government/collections/hs2-property](http://www.gov.uk/government/collections/hs2-property)  
Find out if you're eligible for compensation at:  
[www.gov.uk/claim-compensation-if-affected-by-hs2](http://www.gov.uk/claim-compensation-if-affected-by-hs2)

## Holding us to account

If you are unhappy for any reason you can make a complaint by contacting our HS2 Helpdesk team. For more details on our complaints process, please visit our website:  
[www.hs2.org.uk/how-to-complain](http://www.hs2.org.uk/how-to-complain)

## Contact Us

Contact our HS2 Helpdesk team all day, every day of the year on:

 Freephone **08081 434 434**

 Minicom **08081 456 472**

 Email **[hs2enquiries@hs2.org.uk](mailto:hs2enquiries@hs2.org.uk)**

Write to:

**FREEPOST**

**HS2 Community Engagement**

Website **[www.hs2.org.uk](http://www.hs2.org.uk)**

To keep up to date with what is happening in your local area, visit:  
**[www.hs2inoldoak.co.uk](http://www.hs2inoldoak.co.uk)**

**Please contact us if you'd like a free copy of this document in large print, Braille, audio or easy read. You can also contact us for help and information in a different language.**

HS2 Ltd is committed to protecting personal information. If you wish to know more about how we use your personal information please see our Privacy Notice  
<https://www.gov.uk/government/publications/high-speed-two-ltd-privacy-notice>

**Reference number: HS2-MW-BBVS-Ph1-OOC-St-S4-UT-8-29/01/2021**

High Speed Two (HS2) Limited, registered in England and Wales.  
Registered office: Two Snowhill, Snow Hill Queensway, Birmingham B4 6GA.  
Company registration number: 06791686. VAT registration number: 888 8512 56.