

Notice of planting and archaeology works, Westbury

October 2020 | www.hs2.org.uk

High Speed Two (HS2) is the new high speed railway for Britain. In response to the Covid-19 virus we have worked hard to ensure that our working practices are fully aligned with the Site Operating Procedures produced by the Construction Leadership Council and in line with Government and Public Health England advice. We will be keeping our local website www.hs2inbucksandbox.co.uk up to date with information on our works, and the measures we have in place to maintain the safety.

Please be assured that only sites that can operate within the guidelines are operational. All sites will remain under constant review. We have postponed all face-to-face engagement events and meetings and have put in place a number of channels to communicate with communities, such as letters and phone calls, as well as updates and alerts from each of the local community websites. You can sign up for regular updates in your local area at hs2inbucksandbox.co.uk.

What will we be doing?

As part of our continuing works ahead of the construction of the railway we need to undertake some further work in your area, these works will consist of:

- Construction of a small temporary compound - please see enclosed map for location
- Hedgerow removal for field access and mitigation works
- Installation of fencing
- Planting

If you have a question about HS2 or our works, please contact our HS2 Helpdesk team on 08081 434 434 or email hs2enquiries@hs2.org.uk

Notification



Duration of works

The works will start in October 2020 and will be complete in March 2021

Normal working hours

Monday to Friday 8am to 6pm and Saturday 8am - 1pm. We may also be on site for one hour's start up and shutdown outside of these times

What to expect

Some additional traffic on local roads and noise from equipment. Site storage and welfare vehicles. Site operated with 24-hour security and temporary flood lighting

What we will do

Manage any impacts, such as traffic and noise with the aim of reducing or removing them

Notice of fencing and planting works, Westbury

www.hs2.org.uk

Notification



Compound set up and site access

We will construct a temporary work compound off the A422, Brackley Road. There will be 2 access points leading in to the site locations through existing fields adjacent to our works. Temporary road signage will be installed on the highway verge approaching the site entrance.

Temporary placement of vehicle track matting will be placed from access points from the A422 to the compounds and then toward the work locations.

The compound will be established in late October 2020 and will be removed in December 2020.

Hedgerow removal and mitigation works

The localised removal of three hedgerows are required to gain access through to our works area.

Before any vegetation is cleared it will be thoroughly inspected by qualified ecologists. Any protected species found to be present will be recorded and no vegetation will be cleared until the species have left the site. Extensive ecological and tree surveys have been undertaken in the area ahead of these works. Mitigation of impact on protected species have been assessed and plans established. The vegetation clearance will be undertaken in accordance with:

- HS2 Organisational European Protected Species Great for Crested Newt Licences WML025. First issued March 2017.
- HS2 Organisational European Protected Species Licence for Badger WML024. First issued February 2018.

Further details are available online.

<https://www.gov.uk/government/publications/hs2-phase-oneenvironmental-statement-volume-5-ecology> • The work on HS2 is guided by High-Speed Rail (LondonWestMidlands) Act 2017.

<http://www.legislation.gov.uk/ukpga/2017/7/contents/enacted>

Hedgerow removal and mitigation works continued

This clearance work will be completed by a small workforce who will use machinery and hand-held equipment to clear sections of hedgerows to enable the construction access to take place.

The area will be hand searched by an ecologist then reduced and maintained at 15 centimetres above ground level. Once all areas have been cleared, they will be maintained in a condition that makes it unsuitable for species to return.

Installation of fencing

Fencing installation works are planned to continue in the area until February 2021. This will consist of agricultural style fencing being erected along the boundaries of the land required to construct the railway. Please refer to enclosed map highlighting boundary fencing works.

Planting

We are planting 3,000 saplings within the existing fence line, to deliver a 'green corridor' alongside the new railway. The planting will be a mix of native local species, such as the Midlands Hawthorn and the Black Poplar. These works are necessary to prepare the area ahead of the main construction work that follows. Planting will begin on 9 November 2020. Please refer to the attached map for locations of planting works.

Future works 2021

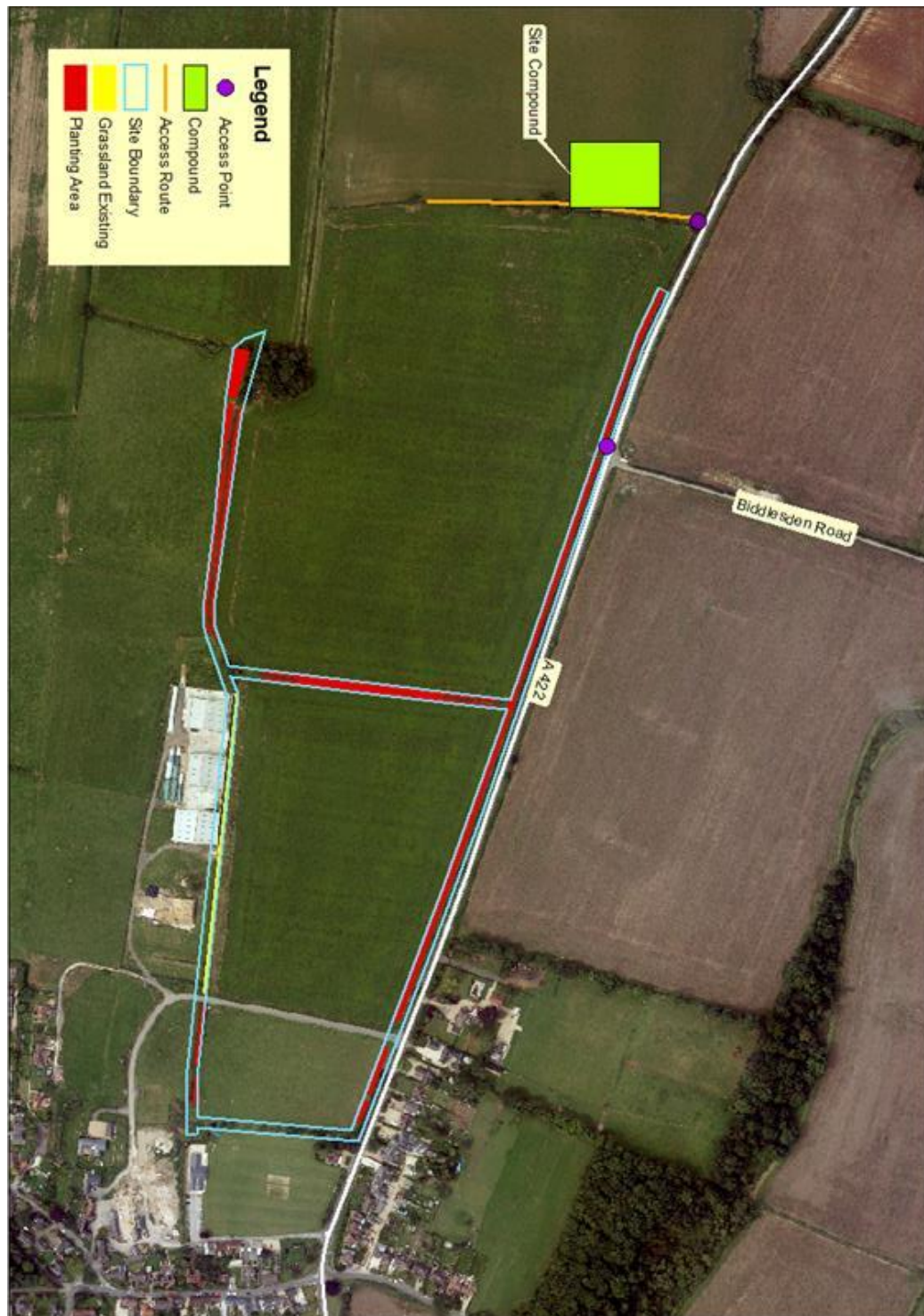
Further to our recent archaeological investigations we will need to return to the Grove Hill Farm / River Ouse area to continue mitigation works. This work is expected to start in January 2021. This will be complete by the end of March 2021, during this time you will see temporary construction signage on the highway verge approaching the entrance to site. The same access point will be maintained from the A422 to carry out the planting and fencing works. The same local compound location will also be used.

Notice of fencing and planting works, Westbury

www.hs2.org.uk

Compound location, planting and fencing works.

Notification



Contact our HS2 Helpdesk team on **08081 434 434**

Keeping you informed

We are committed to keeping you informed about work on HS2. This includes ensuring you know what to expect and when to expect it, as well as how we can help.

Residents' Charter and Commissioner

The Residents' Charter is our promise to communicate as clearly as we possibly can with people who live along or near the HS2 route.

www.gov.uk/government/publications/hs2-residents-charter

We also have an independent Residents' Commissioner whose job is to make sure we keep to the promises we make in the Charter and to keep it under constant review. Find reports at:

www.gov.uk/government/collections/hs2-ltd-residents-commissioner

You can contact the Commissioner at:
residentscommissioner@hs2.org.uk

Construction Commissioner

The Construction Commissioner's role is to mediate and monitor the way in which HS2 Ltd manages and responds to construction complaints. You can contact the Construction Commissioner by emailing:
complaints@hs2-cc.org.uk

Property and compensation

You can find out all about HS2 and properties along the line of route by visiting:

www.gov.uk/government/collections/hs2-property

Find out if you're eligible for compensation at:

www.gov.uk/claim-compensation-if-affected-by-hs2

Holding us to account

If you are unhappy for any reason you can make a complaint by contacting our HS2 Helpdesk team. For more details on our complaints process, please visit our website:

www.hs2.org.uk/how-to-complain

Contact Us

Contact our HS2 Helpdesk team all day, every day of the year on:

 Freephone **08081 434 434**

 Minicom **08081 456 472**

 Email **hs2enquiries@hs2.org.uk**

Write to:

FREEPOST

HS2 Community Engagement

Website **www.hs2.org.uk**

To keep up to date with what is happening in your local area, visit:
www.hs2inyourarea.co.uk

Please contact us if you'd like a free copy of this document in large print, Braille, audio or easy read. You can also contact us for help and information in a different language.

HS2 Ltd is committed to protecting personal information. If you wish to know more about how we use your personal information please see our Privacy Notice
<https://www.gov.uk/government/publications/high-speed-two-ltd-privacy-notice>

Reference number: FUS_AWN_0128.

HS2-EW-FUS-Ph1-Ar-Ce-C2-Eco-39-21/10/2020

High Speed Two (HS2) Limited, registered in England and Wales.

Registered office: Two Snowhill, Snow Hill Queensway, Birmingham B4 6GA.

Company registration number: 06791686. VAT registration number: 888 8512 56.