

Notice of compound set up and archaeology investigation, Twyford

December 2020 | www.hs2.org.uk

High Speed Two (HS2) is the new high speed railway for Britain. We are continually reviewing the works on our construction sites in line with Government and Public Health England (PHE) advice on dealing with COVID-19. The Government's current strategy makes it clear that construction activity can continue as long as it complies with this guidance.

Please be assured that only sites that can operate within the guidelines are operational. All sites will remain under constant review. We have postponed all face-to-face engagement events and meetings and have put in place a number of channels to communicate with communities, such as letters and phone calls, as well as updates and alerts from each of the local community websites. You can sign up for regular updates in your local area at www.hs2inbucksandox.co.uk

What we will be doing?

As part of our continuing works ahead of the construction of the railway we need to undertake some further work in your area, these works will consist of:

- Construction of a small compound
- Boundary fencing
- Archaeological investigations

Construction of a compound

To enable us to carry out the archaeological investigation, we will need to construct an additional compound to facilitate our works. To build the compound we will initially use mobile welfare facilities. Once built the compounds will include temporary trackway, office and welfare facilities alongside storage of machinery and materials. Car parking and 24-hour security with temporary flood lighting will also be in place. Please see maps below for location.

If you have a question about HS2 or our works, please contact our HS2 Helpdesk team on 08081 434 434 or email hs2enquiries@hs2.org.uk

Notification



Duration of works

The compound construction will start in January 2021 and actual works will be completed by end June 2021

Normal working hours:

Monday to Friday 8am – 6pm

Our contractors may also be on site for one hour's quite start-up and shutdown outside of these times

What to expect

Some additional traffic on local roads. Some noise from equipment used for the works. Site storage and welfare vehicles. Site manned with 24-hour security and temporary flood lighting

What we will do

Manage any impacts, such as traffic and noise with the aim of reducing or removing them

Notice of compound set up and archaeology investigation, Twyford

www.hs2.org.uk

Notification



Archaeological investigations

We will begin archaeological investigations within the area shown on the map. These works will enable a greater understanding of archaeology of Twyford. Once the work is complete, the excavation areas will be backfilled.

The compound shown on the map below will be used by the archaeological teams to undertake their work.

These works are currently taking place by Infra, Fusion's archaeology subcontractor and will be completed by Christmas. The digging and investigations will be done by small teams of archaeologists using a mechanical excavator. There will be teams on site and a small number of supervision staff visiting site to ensure the work is progressing to plan and is being done safely.

Additional ground investigations are programmed to start in the new year. We are planning to keep the compound in place to facilitate all mitigation works, in both locations, south of Cowley's Farm. This will be in place until March 2021. There will be an additional temporary compound located off West Street, to facilitate works at Padbury brook. This will be in place until May 2021.

How may this affect you?

Access to the site will be off Cowley's Farm Road and West Street, leading to south of and north of Padbury Brook. The access points for these fields are shown on the plan below.

Temporary verge access signage will be installed on the highway verge approaching the entrance to the site. These will be on standard signage A-Frames and secured with ballasted sandbags which will be placed on the roadside verges. These will be in place for the duration of the works.

There may be some noise from the machinery, this will be restricted to running between the hours of 8am to 6pm Monday to Friday. There may be occasional weekend working subject to local authority consent. If applicable work will be between 8am and 1pm and updates will be shared on www.hs2inbucksandbox.co.uk.

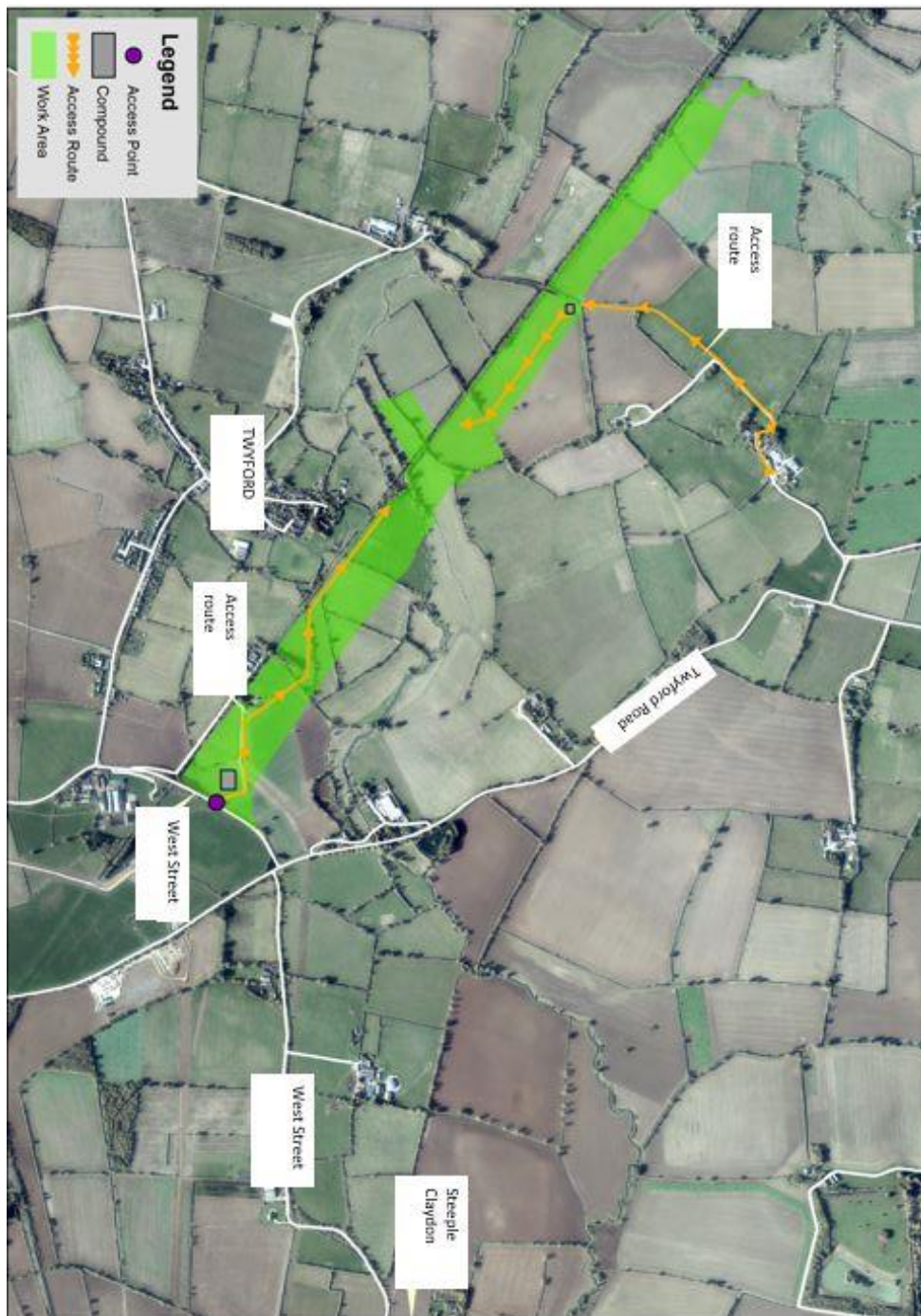
We will be working hard to ensure any impacts on residents are kept to a minimum during these and all our future works. You may notice a little extra traffic on the road immediately around the sites with workers moving to and from the site, and occasional delivery vehicles.

Notice of compound set up and archaeology investigation, Twyford

www.hs2.org.uk

Site compound, access routes and archaeology investigations work

Notification



Contact our HS2 Helpdesk team on **08081 434 434**

Keeping you informed

We are committed to keeping you informed about work on HS2. This includes ensuring you know what to expect and when to expect it, as well as how we can help.

Residents' Charter and Commissioner

The Residents' Charter is our promise to communicate as clearly as we possibly can with people who live along or near the HS2 route.
www.gov.uk/government/publications/hs2-residents-charter

We also have an independent Residents' Commissioner whose job is to make sure we keep to the promises we make in the Charter and to keep it under constant review. Find reports at:
www.gov.uk/government/collections/hs2-ltd-residents-commissioner

You can contact the Commissioner at:
residentscommissioner@hs2.org.uk

Construction Commissioner

The Construction Commissioner's role is to mediate and monitor the way in which HS2 Ltd manages and responds to construction complaints. You can contact the Construction Commissioner by emailing:
complaints@hs2-cc.org.uk

Property and compensation

You can find out all about HS2 and properties along the line of route by visiting:
www.gov.uk/government/collections/hs2-property
Find out if you're eligible for compensation at:
www.gov.uk/claim-compensation-if-affected-by-hs2

Holding us to account

If you are unhappy for any reason you can make a complaint by contacting our HS2 Helpdesk team. For more details on our complaints process, please visit our website:
www.hs2.org.uk/how-to-complain

Contact Us

Contact our HS2 Helpdesk team all day, every day of the year on:

 Freephone **08081 434 434**

 Minicom **08081 456 472**

 Email **hs2enquiries@hs2.org.uk**

Write to:

FREEPOST

HS2 Community Engagement

Website **www.hs2.org.uk**

To keep up to date with what is happening in your local area, visit:
www.hs2inyourarea.co.uk

Please contact us if you'd like a free copy of this document in large print, Braille, audio or easy read. You can also contact us for help and information in a different language.

HS2 Ltd is committed to protecting personal information. If you wish to know more about how we use your personal information please see our Privacy Notice
<https://www.gov.uk/government/publications/high-speed-two-ltd-privacy-notice>

Reference number: FUS_AWN_0155

HS2-EWFusion -Ph1-Ar-Ce-C1-Eco-7-30/11/2020

High Speed Two (HS2) Limited, registered in England and Wales.

Registered office: Two Snowhill, Snow Hill Queensway, Birmingham B4 6GA.

Company registration number: 06791686. VAT registration number: 888 8512 56.