

Contact our HS2 Helpdesk team on **08081 434 434**

HS2 Update

Waddesdon | July 2020

High Speed Two (HS2) is the new high speed railway for Britain. In response to the Covid-19 virus we have worked hard to ensure that our working practices are fully aligned with the Site Operating Procedures produced by the Construction Leadership Council. These have been endorsed by Public Health England.

What is coming up in your area?

In preparation for our main works to start, we are undertaking the following works during 2020:

- temporary compound
- ecological surveys
- species translocation
- vegetation clearance
- fencing
- ecology site maintenance
- archaeology

What are we doing?

Site compound

To enable us to complete all the works detailed above we will need to set up two small temporary site compounds. Location details for these compounds are on the map enclosed. The primary access to the site will be from the A41, Blackgrove Road. The secondary access will be from the A41,

Station Road leading to Quainton Road. Each compound site will have 24/7 security, welfare units, storage facilities, temporary lighting and car parking for the workforce. To access across the fields temporary metal trackway will be laid for vehicle access. The site will be set up in early July 2020.

Ecology surveys and mitigation

We are continuing our ecological surveys in relation to species such as great crested newts, reptiles, bats, badgers and owls. Surveys will continue to take place between July and November 2020.

Following the results of these surveys we will begin our mitigation works between summer 2020 and spring 2021. This will include great crested newts and reptiles to a predetermined prepared location.

Site compound set up

Early July 2020

Ecology Surveys

Ongoing Mid-July – mid November 2020

Ecological Mitigation

Summer 2020 – Spring 2021

Fencing

Starting July through Summer 2020

Archaeological surveys

Summer 2020

Vegetation Clearance

Mid July – late September 2020

Archaeological further investigations

Autumn 2020 to Spring 2021 (dependent upon survey results)



Waddesdon Update

Ecology translocation

In the case of Great Crested Newts and reptiles summer is the season where the species are active, we will be moving populations to their new habitat sites. The translocation will take place this summer.

Newt fencing consists mainly of a plastic membrane which is buried into the ground and supported by stakes. This is to prevent newts entering the work area, and to collect the newts.

Collected newts are then taken to an ecology approved mitigation site that has been prepared for them and is suitable to support the population.

We will move the newts and reptiles from an area scheduled for future works to a new habitat site. Ecologists use pit fall traps and mats which are set along the line of the fencing (please see images below).

When the newts move from the breeding pond, they move towards the line of the fence until they either fall into the trap or hide under a mat. All traps are checked daily by experienced ecologists who are accredited under the HS2 Great Crested Newt Licence.

Grass and shrub maintenance

Grass and hedgerow cutting works are undertaken under the instructions of the ecologist on site, who decides the appropriate methods based on the vegetation present. This involves a detailed hand search to determine if any ecology is present. If it is found that the area is clear of ecology then the works will be allowed to take place. A small workforce will use machinery and hand-held equipment to cut sections of grass and hedgerows. Grass will be cut down to 15 centimetres above ground. Hedges will only be removed if required for the access route around the site.



Example of newt trapping fencing

Waddesdon Update

Maintenance of sites

Areas that have been cleared will be maintained in a condition that makes it unsuitable for newts. The area will be checked by an ecologist and any suitable hibernation or vegetation that may provide habitat for newts and reptiles will be hand searched and then strimmed down to 15 centimetres. A second cut will be undertaken on the following day, after a recheck of the area by the ecologist. The second cut should take the vegetation down to 5 centimetres above ground level, the vegetation will then be maintained at this height to discourage newts and reptiles from entering the area.

Fencing

Our perimeter fencing works will begin in summer 2020 and will be completed by the end of the year. For this stage of works we will not be closing any of the four Public Rights of Way but we will need to occasionally cross over them with machinery to access working areas. To ensure this happens safely we will have marshals in place who will suspend pedestrian access temporarily while the machinery passes through.

Archaeology works

As part of HS2's enabling works, we need to undertake some archaeological intrusive survey works during summer 2020, following on from this result there may be further excavations which will commence later in the year.

Methods

Desktop study

Before work commences, archaeologists conduct research to first establish what may be contained within the site area. A desktop study is conducted, which is a search of the archives to uncover records of any historic settlements or activity which will uncover clues that may help when carrying out work onsite.

Excavation works

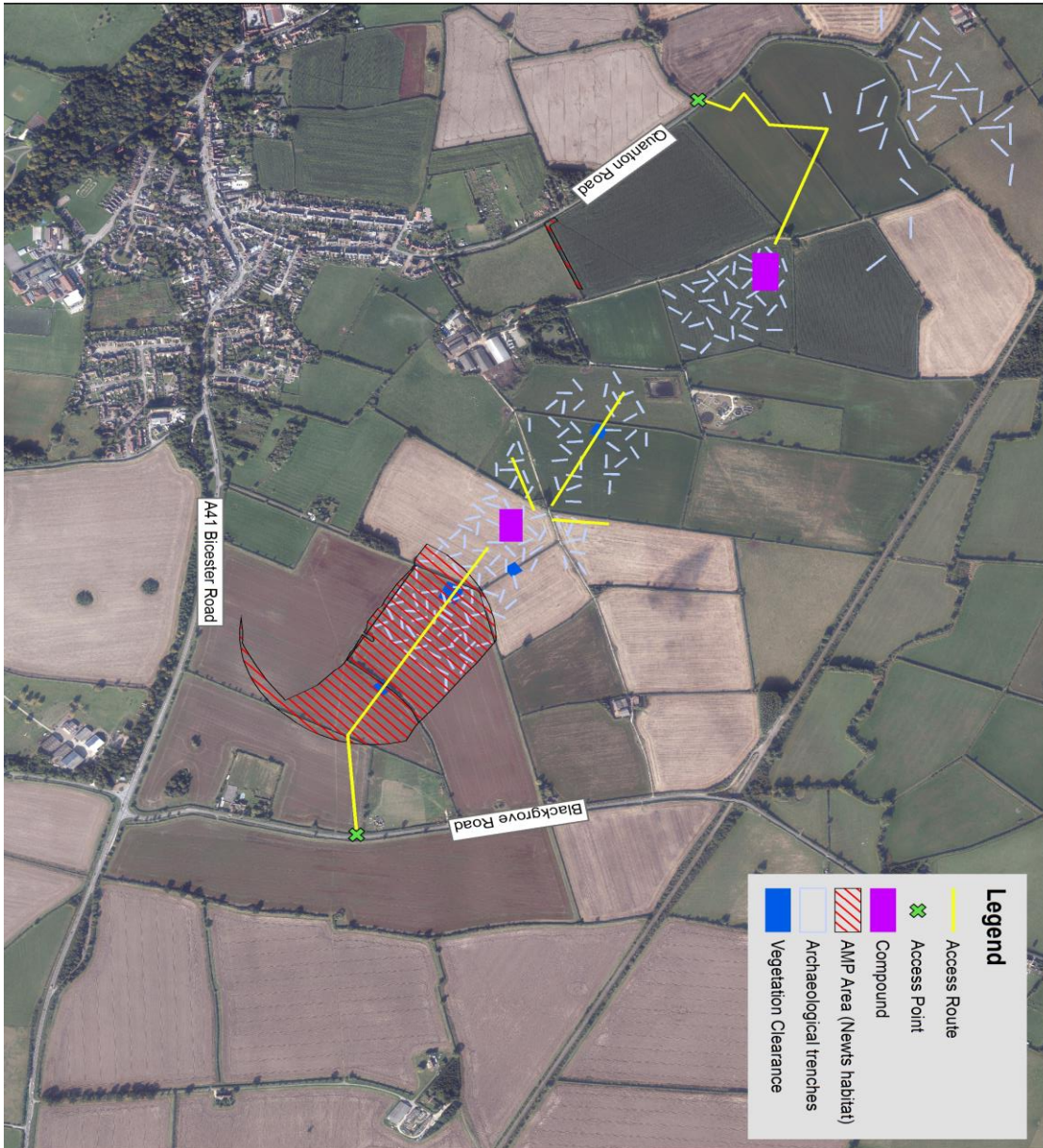
If any archaeology of significance has been identified, larger areas will be stripped to open up the archaeology initially through trial trenching and then depending upon the result further mitigation work will be undertaken. This will allow the archaeological teams to create a more complete picture of the findings.



Example of trial trenching

Waddesdon Update

Location map



Keeping you informed

We are committed to keeping you informed about work on HS2. This includes ensuring you know what to expect and when to expect it, as well as how we can help.

Residents' Charter and Commissioner

The Residents' Charter is our promise to communicate as clearly as we possibly can with people who live along or near the HS2 route.

www.gov.uk/government/publications/hs2-residents-charter

We also have an independent Residents' Commissioner whose job is to make sure we keep to the promises we make in the Charter and to keep it under constant review. Find reports at:

www.gov.uk/government/collections/hs2-ltd-residents-commissioner

You can contact the Commissioner at:
residentscommissioner@hs2.org.uk

Construction Commissioner

The Construction Commissioner's role is to mediate and monitor the way in which HS2 Ltd manages and responds to construction complaints. You can contact the Construction Commissioner by emailing:
complaints@hs2-cc.org.uk

Property and compensation

You can find out all about HS2 and properties along the line of route by visiting:

www.gov.uk/government/collections/hs2-property

Find out if you're eligible for compensation at:

www.gov.uk/claim-compensation-if-affected-by-hs2

Holding us to account

If you are unhappy for any reason you can make a complaint by contacting our HS2 Helpdesk team. For more details on our complaints process, please visit our website:

www.hs2.org.uk/how-to-complain

Contact Us

Contact our HS2 Helpdesk team all day, every day of the year on:

 Freephone **08081 434 434**

 Minicom **08081 456 472**

@ Email **HS2enquiries@hs2.org.uk**

Write to:

FREEPOST

HS2 Community Engagement

Website **www.hs2.org.uk**

To keep up to date with what is happening in your local area, visit:
www.HS2inyourarea.co.uk

Please contact us if you'd like a free copy of this document in large print, Braille, audio or easy read. You can also contact us for help and information in a different language.

HS2 Ltd is committed to protecting personal information. If you wish to know more about how we use your personal information please see our Privacy Notice
<https://www.gov.uk/government/publications/high-speed-two-ltd-privacy-notice>

Reference number: FUS_NL_0010

High Speed Two (HS2) Limited, registered in England and Wales.

Registered office: Two Snowhill, Snow Hill Queensway, Birmingham B4 6GA.

Company registration number: 06791686. VAT registration number: 888 8512 56