

# Chetwode Archaeology and compound set up

December 2020 | [www.hs2.org.uk](http://www.hs2.org.uk)

High Speed Two (HS2) is the new high speed railway for Britain. We are continually reviewing the works on our construction sites in line with Government and Public Health England (PHE) advice on dealing with COVID-19. The Government's current strategy makes it clear that construction activity can continue as long as it complies with this guidance.

Please be assured that only sites that can operate within the guidelines are operational. All sites will remain under constant review. We have postponed all face-to-face engagement events and meetings and have put in place a number of channels to communicate with communities, such as letters and phone calls, as well as updates and alerts from each of the local community websites. You can sign up for regular updates in your local area at [www.hs2inbucksandox.co.uk](http://www.hs2inbucksandox.co.uk)

## What will we be doing?

As part of our continuing works ahead of the construction of the railway we need to undertake some further work in your area. These works will consist of:

- Construction of a small compound
- Boundary fencing
- Archaeological investigation

The site will be accessed from School End Lane, shown on the map below. These works will start in January 2021 and be completed in June 2021.

**If you have a question about HS2 or our works, please contact our HS2 Helpdesk team on 08081 434 434 or email [hs2enquiries@hs2.org.uk](mailto:hs2enquiries@hs2.org.uk)**

## Notification



### Duration of works

The works will start in January 2021 and will be completed by June 2021

Normal working hours Monday to Friday 8am to 6pm. and Saturday 8am - 1pm. We may also be on site for one hour's start up and shutdown outside of these times

### What to expect

Some additional traffic on local roads. Some noise from equipment used for the works. Site storage and welfare vehicles. Site operated with 24 hour security and temporary lighting

### What we will do

Manage any impacts, such as traffic and noise with the aim of reducing or removing them

# Chetwode Archaeology and compound set up

Notification



[www.hs2.org.uk](http://www.hs2.org.uk)

## What is a construction compound?

A small temporary construction compound will be established to support the works taking place. To build the compound we will initially use mobile welfare facilities. Once built the small compound will include temporary trackway, an office and welfare facilities alongside the storage of machinery and materials. Car parking, temporary lighting and 24-hour security will also be in place.

## Archaeological investigations

As part of HS2's continued programme of archaeology works in your local area we have already carried out geophysical survey and trial trench evaluation to identify areas of possible archaeological interest. The next steps of our archaeological investigation work will involve excavating larger areas to map, sample and record the archaeology.

We will begin archaeological investigations within the area shown on the map. These works will enable a greater understanding of the archaeology of Chetwode. Once the work is complete, the excavation areas will be backfilled.

The digging and investigations will be done by small teams of archaeologists using a mechanical excavator. There will be teams on site and a small number of supervision staff visiting site to ensure the work is progressing to plan and is being done safely.

Our access will be off School End Lane leading into site. Temporary verge access signage will be installed on the highway verge approaching the entrance to the site. These will be on standard signage A-Frames and secured with ballasted sandbags which will be placed on the roadside verges. These will be in place for the duration of the work.

There may be a requirement for the works to continue past the completion date highlighted, this depends on what is discovered. We will send you an update to inform you if we require additional access.

# Chetwode Archaeology and compound set up

Notification



[www.hs2.org.uk](http://www.hs2.org.uk)

## Installation of boundary fencing

Fencing works are planned to continue in the area for 2 weeks. This will consist of heras style temporary fencing, erected along the boundaries of the land required for investigation. Please refer to the enclosed map highlighting boundary fencing works.

## How may this affect you?

To enable the archaeological works plant material will need to be delivered to the site. Access will be from A4421, leading from the Tingewick bypass on to School End Lane. This will initially be for the 3 weeks, to allow the workforce to mobilise. There will be moderate construction traffic to enable vehicles access into the works areas from the public highway. Signs will be erected to highlight work vehicles entering/exiting the site. Vehicles re-joining the highway will be cleaned to avoid mud being deposited on the road surface.

We will be working hard to ensure any impacts on residents are kept to a minimum during these and all our future works. We have put some additional measures in place for this phase of works regarding access control. We have liaised with our supply chain and operating contractors working in the area to ensure the following:

- All deliveries are to be coordinated with the contractor and delivery/suppliers
- Map plan to be given to all suppliers and delivery drivers
- Coordinated calls on delivery times with contractor and supplier
- Meeting point to be agreed with contractor and delivery truck driver
- Contractor to escort delivery to site at all times.

There may be some noise from the machinery. This will be restricted to running between the hours of 8am to 6pm Monday to Friday. We may also be on site for one hour's start up and shutdown outside of these times. There may be occasional Saturday weekend working 8am - 1pm. Updates will be shared on [www.hs2inbucksandox.co.uk](http://www.hs2inbucksandox.co.uk).

We will continue working to reduce the impact caused by our works as much as reasonably practicable. If you have any further queries do not hesitate to get back in touch with the HS2 Helpdesk.

---

Contact our HS2 Helpdesk team on **08081 434 434**

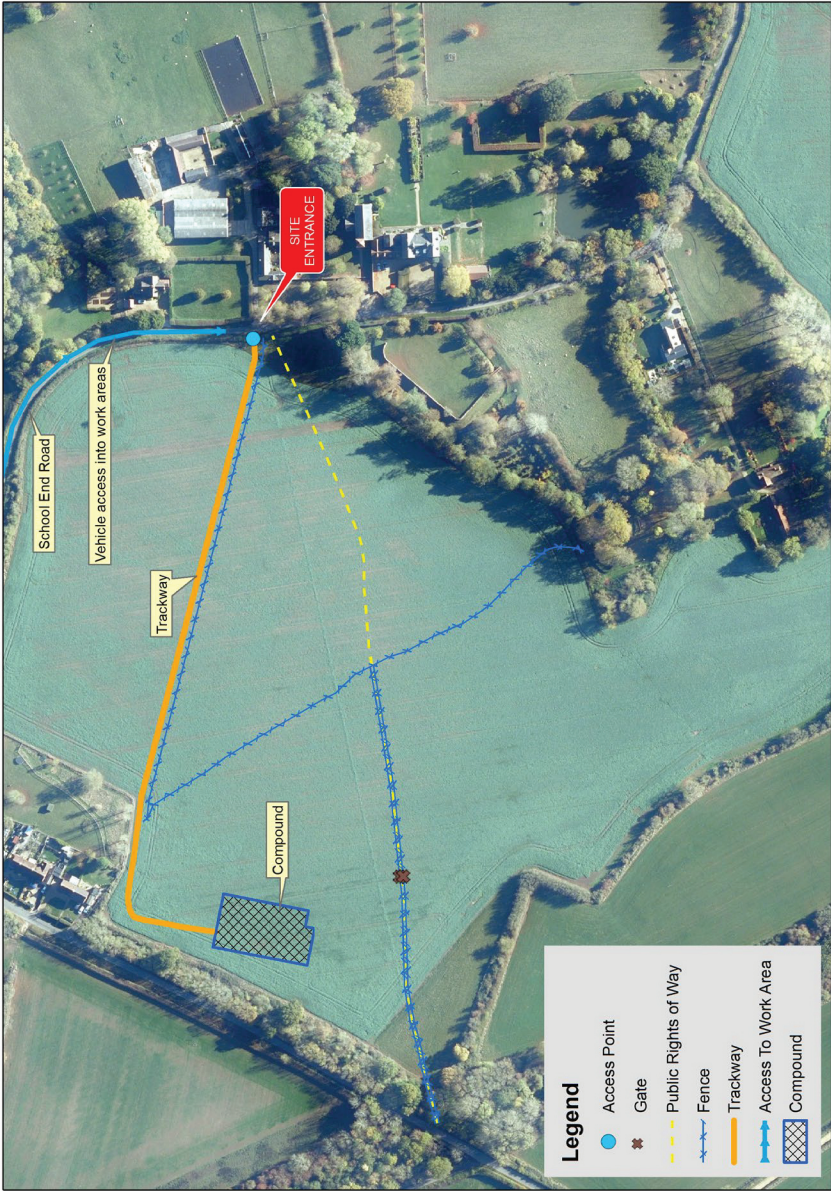
# Chetwode Archeaology and compound set up

Notification



[www.hs2.org.uk](http://www.hs2.org.uk)

Location of the archaeological works



Contact our HS2 Helpdesk team on **08081 434 434**

# What else is happening in your area?

[www.hs2.org.uk](http://www.hs2.org.uk)

## About our Community and Business Funds

We are offering two funds that are available to local communities and businesses between Birmingham and the West Midlands, to help with the disruption caused by our construction work. These are the Community and Environment Fund (CEF) and the Business and Local Economy Fund (BLEF).

The CEF is designed to give communities the opportunity to share in the benefits of HS2. It is an allocated fund that communities are able to apply for, to help to support local projects that aim to improve their local area.

The BLEF is designed to support local economies that may be disrupted by the construction of HS2. BLEF grants are for local business support organisations and local authorities to help maintain business activity in local communities.

For more information about each of these funds, including how to apply, please visit: <https://www.groundwork.org.uk/hs2funds>



## About our Commonplace websites

The planning and construction of HS2 is a huge operation – it is currently the largest infrastructure project in Europe.

It's important to us that you are kept up to date about the progress of the Project and any work that may impact you or your community. We have a series of community-focused websites where you can find out what is happening in your local area and sign up for updates about our activities.

Our Commonplace sites currently serve Birmingham, Bucks and Oxfordshire, Cheshire, Euston and Camden, Hertfordshire, Hillingdon, Northamptonshire, Old Oak, Solihull, Staffordshire and Warwickshire. More sites are being prepared to serve other areas.

To find your local Commonplace website, visit: <https://hs2.commonplace.is/>

For further information about Phase 2a and Phase 2b, visit : <https://www.gov.uk/government/organisations/high-speed-two-limited>



Contact our HS2 Helpdesk team on **08081 434 434**

# Keeping you informed

We are committed to keeping you informed about work on HS2. This includes ensuring you know what to expect and when to expect it, as well as how we can help.

## Residents' Charter and Commissioner

The Residents' Charter is our promise to communicate as clearly as we possibly can with people who live along or near the HS2 route.  
[www.gov.uk/government/publications/hs2-residents-charter](http://www.gov.uk/government/publications/hs2-residents-charter)

We also have an independent Residents' Commissioner whose job is to make sure we keep to the promises we make in the Charter and to keep it under constant review. Find reports at:  
[www.gov.uk/government/collections/hs2-ltd-residents-commissioner](http://www.gov.uk/government/collections/hs2-ltd-residents-commissioner)

You can contact the Commissioner at:  
[residentscommissioner@hs2.org.uk](mailto:residentscommissioner@hs2.org.uk)

## Construction Commissioner

The Construction Commissioner's role is to mediate and monitor the way in which HS2 Ltd manages and responds to construction complaints. You can contact the Construction Commissioner by emailing:  
[complaints@hs2-cc.org.uk](mailto:complaints@hs2-cc.org.uk)

## Property and compensation

You can find out all about HS2 and properties along the line of route by visiting:  
[www.gov.uk/government/collections/hs2-property](http://www.gov.uk/government/collections/hs2-property)  
Find out if you're eligible for compensation at:  
[www.gov.uk/claim-compensation-if-affected-by-hs2](http://www.gov.uk/claim-compensation-if-affected-by-hs2)

## Holding us to account

If you are unhappy for any reason you can make a complaint by contacting our HS2 Helpdesk team. For more details on our complaints process, please visit our website:  
[www.hs2.org.uk/how-to-complain](http://www.hs2.org.uk/how-to-complain)

## Contact Us

Contact our HS2 Helpdesk team all day, every day of the year on:

 Freephone **08081 434 434**

 Minicom **08081 456 472**

 Email **[hs2enquiries@hs2.org.uk](mailto:hs2enquiries@hs2.org.uk)**

Write to:

**FREEPOST**

**HS2 Community Engagement**

Website **[www.hs2.org.uk](http://www.hs2.org.uk)**

To keep up to date with what is happening in your local area, visit:  
**[www.hs2inyourarea.co.uk](http://www.hs2inyourarea.co.uk)**

**Please contact us if you'd like a free copy of this document in large print, Braille, audio or easy read. You can also contact us for help and information in a different language.**

HS2 Ltd is committed to protecting personal information. If you wish to know more about how we use your personal information please see our Privacy Notice  
<https://www.gov.uk/government/publications/high-speed-two-ltd-privacy-notice>

**Reference number: FUS\_AWN\_0156 HS2-EWFusion -Ph1-Ar-Ce-C1-Eco-6-30/11/2020**

High Speed Two (HS2) Limited, registered in England and Wales.  
Registered office: Two Snowhill, Snow Hill Queensway, Birmingham B4 6GA.  
Company registration number: 06791686. VAT registration number: 888 8512 56.