

Early works notification in the Calvert area

January 2021 | www.hs2.org.uk

High Speed Two (HS2) is the new high speed railway for Britain.

We are continually reviewing the works on our construction sites in line with Government and Public Health England (PHE) advice on dealing with COVID-19. The Government's current strategy makes it clear that construction activity can continue as long as it complies with this guidance. Please be assured that only sites that can operate within the guidelines are operational. All sites will remain under constant review. You can sign up for regular updates in you local area at www.hs2inbucksandox.co.uk

What are we doing?

We are undertaking early construction works to prepare the area for the HS2 route. This activity includes:

1. Ground Investigation (GI) works
2. Utility works including trail holes
3. Continuing to set up works compounds and establishing new ones as required
4. Localised clearance of vegetation and fencing
5. Haul road, access roads and drainage activities
6. Excavation, movement and storage of earthworks

When will these works take place?

We are looking to start these early works in late October and continue until Summer 2021. We will continue to keep you updated with further information as the works continue.



If you have a question about HS2 or our works, please contact our HS2 Helpdesk team on 08081 434 434 or email hs2enquiries@hs2.org.uk

Notification



Duration of works

Normal working hours:
Monday to Friday
8.00am – 6.00pm
Saturday
8.00am – 1.00pm

Some activities may take place outside these hours (inc. Sundays) and details included in this notice. Our contractors may be on site for one hour's start-up and shutdown either side of these times.

What to expect

Varied activities with both quiet and busier periods.

Noise from equipment used for the works.

Traffic management on some local roads and some additional traffic.

Closure of Public Rights of Way.

What we will do

Manage any environmental impacts, such as traffic and noise.

Respond promptly to any complaints and take appropriate action.

Take care to respect the community.

Early works notification in the Calvert area

Notification



www.hs2.org.uk

What does the work involve?

West Street Compound

We will continue the construction of the compound in West Street. Initial work will create the hardstanding and perimeter drainage. Once this is completed, all internal drainage, and service connections will take place. The compound will then be fitted for office and welfare facilities. In order for these works to be carried out, temporary traffic management will take place.

Some of the activities involved in setting up the compound will need to take place throughout the weekend, including Sundays, these works will be kept to a minimum.

All deliveries from Calvert North will be accepted into West Street main compound and transported to their respective site via the access road.

Internal access road

Throughout the latter part of 2020 and into 2021, we will begin creating a dedicated haul road and access roads along the line of the HS2 route. In order to construct these roads, we will need to carry out localised vegetation clearance, drainage work and fencing. Once built, these roads will help move materials along the line of the route, keeping lorries off the local road network as much as possible.

There will be specific points at which our HGVs are allowed to gain access to the haul road. Lorry routes have been set out in agreement with the local authority and localised traffic management and vegetation clearance may be required in order to carry out this work.

The initial stretch to be constructed in this area will connect West Street compound to the East West Rail (EWR) overbridge and West Street to the Charndon Lodge underbridge. The section to the EWR will travel parallel to the existing.

The section to Charndon Lodge will cross Gawcott Road south of the compound and travel parallel to Gawcott Road on the west.



Contact our HS2 Helpdesk team on **08081 434 434**

Early works notification in the Calvert area

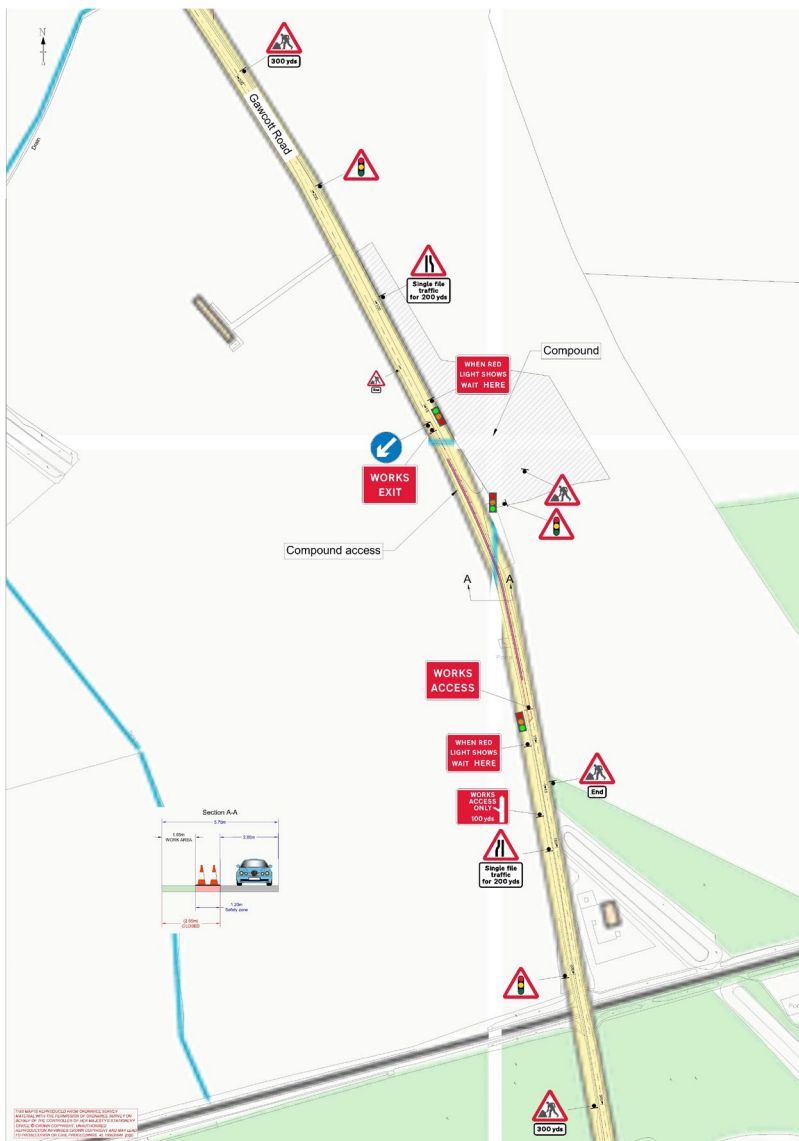
Notification



www.hs2.org.uk

With the construction of the access road there will be a need to cross the Gawcott Road, which will mean lane closures with traffic management on the road late October 2020 for two weeks. In order to do this, there will be lane closures with traffic management on Gawcott Road late October 2020 for two weeks. This will enable the construction and tie in of the crossing. There will be a further closure at the end of 2020 for up to one month along with a closure of a local Public Right of Way (PRoW). The works in this area will include earthworks, lime stabilisation, capping and surfacing of the site access road. This will include the construction and installation of drainage ditches and surface drainage solution for the site access road.

The map below illustrates the planned traffic management including signage and signal locations for Gawcott Road.



Contact our HS2 Helpdesk team on **08081 434 434**

Early works notification in the Calvert area

www.hs2.org.uk

Notification

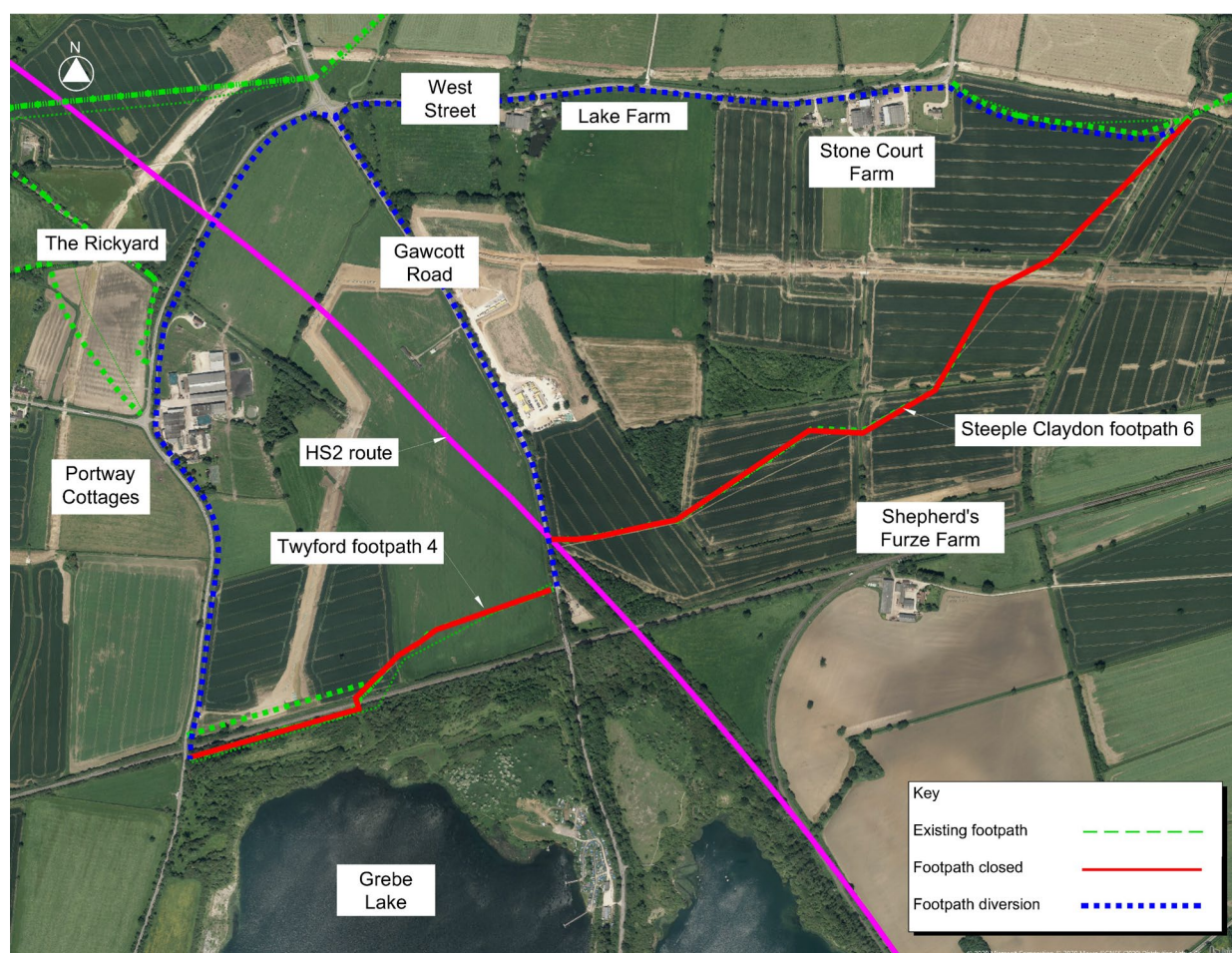


Public Rights of Way (PRoW)

As previously stated, whilst work is ongoing to construct the internal access road there will be a need to close some of the designated PRoW routes. These closures are designated around the need for the construction and running of the internal access road and to change the PRoW route away from the designated area for stockpiling.

The closures of the PRoW will commence from October 2020 and continue until Summer 2024. The diversion routes for pedestrians will be clearly signposted at several designated places along the route.

The map below shows the closure and diversion for the PRoW.



Contact our HS2 Helpdesk team on **08081 434 434**

Early works notification in the Calvert area

www.hs2.org.uk

What does the work involve?

East West Rail overbridge

The proposed East West Rail overbridge will carry two tracks over the three tracks of the HS2 line, part of the main works programme taking place in the Calvert area and this forms part of the pre-earthworks drainage which will remove the water from site during the excavation phase. Once completed, work will start on constructing piles to enable the ground that the bridge is to be built on to be tested before the east and west abutment can be constructed in which the bridge structure rests on.

Charndon Lodge underbridge

Charndon Lodge underbridge will require pre-earthworks drainage work to be carried out to remove the water from site during the excavation phase. The excavation will then be complete and working platform and foundations constructed allowing the abutments to be constructed in which the bridge structure rests on.

Perry Hill overbridge

In order to start the works on the overbridge there will be a need to undertake pre-earthworks drainage which will remove the water from site during the excavation phase. After this construction will start which include test piles to assess the ground stability, abutments for the bridge structure to rest upon and following this the bridge structure will be built.

Temporary railhead and material stockpiling

As part of the early works in Calvert, it is intended to stockpile imported materials in preparation of works on permanent assets. This includes taking delivery of materials on the existing Marylebone to Claydon - Claydon Loop (Calvert Junction to Claydon L&NE Junction) from the South. Trains will be offloaded within the Calvert cutting area near Shepherd's Furze Farm and a temporary stockpile will be created within the available land in this area. The material will supply the temporary works for the East West Rail Overbridge and Charndon Lodge underbridge. This includes other assets within the vicinity such as crane and piling platforms. In addition, a material stockpile will be established so that materials excavated can remain in the area. Both stockpiles are clearly marked in the map included in this notice.

These works will involve working outside normal hours and will be monitored closely to minimise their impact on nearby communities.

Notification



Contact our HS2 Helpdesk team on **08081 434 434**

Early works notification in the Calvert area

www.hs2.org.uk

Ground Investigations

We will continue to carry out Ground Investigation (GI) surveys throughout 2020 and into 2021. These activities will give us more information about the type, strength, and details of the land where the new railway will be built. To understand the ground conditions, we need to collect a variety of test samples from carefully selected areas of soil. In most cases, access will be from existing public rights of way or agreed with local landowners.

Ground investigation works along the line of the railway in the Calvert area will be carried out during weekend possessions in order to coordinate works with railway operations, this will include Sunday works.

Calvert Road batching plant and compound

Initial work creating the hardstanding and perimeter drainage is being completed in October 2020. Once this is done all internal drainage, service connections and the process for fitting the compound out for office and welfare facilities and temporary traffic management will take place. A number of LGV's will be required to deliver the pre-made batching plant onto site from November 2020. Cabin deliveries will start to be delivered in December. Construction work for batching plant starts early 2021.

Survey work

We will be using a groundbreaking procedure to detect and avoid buried services. This is called a PAS128b survey and will be required for any ground disturbing activities.

For the Calvert area this will include, but is not limited to:

- temporary fencing;
- soil stripping;
- excavation; and
- utilities diversions.

A number of PAS128b teams will survey any areas in which these activities will take place. A PAS128b survey consist of an initial site walkover and survey of any signs of existing services. This is then followed by a complete ground penetrating radar survey and tracing of any identified services.

Notification



Early works notification in the Calvert area

Notification



www.hs2.org.uk

Community opportunities

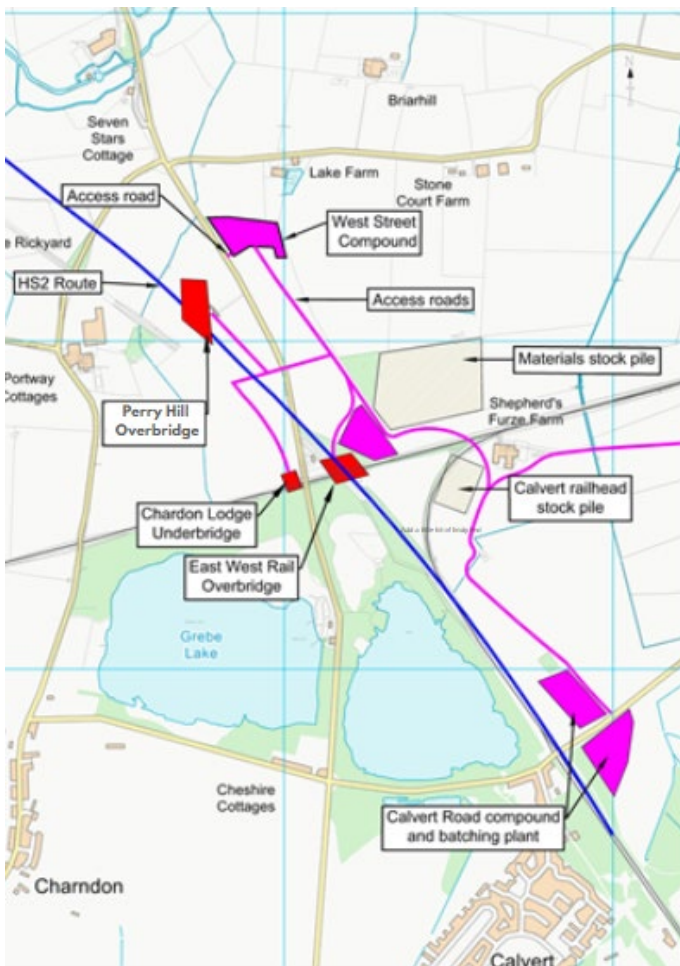
We have the opportunity during this project to provide the community a selection of wood chippings and timber that can be used across local community projects.

- We will have approximately 15 - 20 tonnes of wood chippings available. This is ideal for use on pathways, gardens and mulching.
- Around 60 - 70 tonnes of timber will be available for use within the local community for firewood, benching/furniture, sculpture, fencing, school programmes or any other local project that could benefit.

Get in touch with hs2enquiries@hs2.org.uk to find out more.

Area map

The map illustrates the works across the main Calvert area. The HS2 trace is marked in blue, the areas in red represent the bridge structures and the areas in pink represent the compounds and access roads. The areas mentioned previously for stockpiles are shaded and identified.



Contact our HS2 Helpdesk team on **08081 434 434**

Keeping you informed

We are committed to keeping you informed about work on HS2. This includes ensuring you know what to expect and when to expect it, as well as how we can help.

Residents' Charter and Commissioner

The Residents' Charter is our promise to communicate as clearly as we possibly can with people who live along or near the HS2 route.
www.gov.uk/government/publications/hs2-residents-charter

We also have an independent Residents' Commissioner whose job is to make sure we keep to the promises we make in the Charter and to keep it under constant review. Find reports at:
www.gov.uk/government/collections/hs2-ltd-residents-commissioner

You can contact the Commissioner at:
residentscommissioner@hs2.org.uk

Construction Commissioner

The Construction Commissioner's role is to mediate and monitor the way in which HS2 Ltd manages and responds to construction complaints. You can contact the Construction Commissioner by emailing:
complaints@hs2-cc.org.uk

Property and compensation

You can find out all about HS2 and properties along the line of route by visiting:
www.gov.uk/government/collections/hs2-property
Find out if you're eligible for compensation at:
www.gov.uk/claim-compensation-if-affected-by-hs2

Holding us to account

If you are unhappy for any reason you can make a complaint by contacting our HS2 Helpdesk team. For more details on our complaints process, please visit our website:
www.hs2.org.uk/how-to-complain

Contact Us

Contact our HS2 Helpdesk team all day, every day of the year on:

 Freephone **08081 434 434**

 Minicom **08081 456 472**

 Email **hs2enquiries@hs2.org.uk**

Write to:

FREEPOST

HS2 Community Engagement

Website **www.hs2.org.uk**

To keep up to date with what is happening in your local area, visit:
www.hs2inyourarea.co.uk

Please contact us if you'd like a free copy of this document in large print, Braille, audio or easy read. You can also contact us for help and information in a different language.

HS2 Ltd is committed to protecting personal information. If you wish to know more about how we use your personal information please see our Privacy Notice
<https://www.gov.uk/government/publications/high-speed-two-ltd-privacy-notice>

Reference number: 1MC07-CEK-IN-NTE-CS07_CL13-000002

High Speed Two (HS2) Limited, registered in England and Wales.
Registered office: Two Snowhill, Snow Hill Queensway, Birmingham B4 6GA.
Company registration number: 06791686. VAT registration number: 888 8512 56.