

## Notice of public right of way diversion in Wendover, Ellesborough Road South Field

February 2020 | [www.hs2.org.uk](http://www.hs2.org.uk)

High Speed Two (HS2) is the new high speed railway for Britain. We are continually reviewing the works on our construction sites in line with Government and Public Health England (PHE) advice on dealing with COVID-19. The Government's current strategy makes it clear that construction activity can continue as long as it complies with this guidance. Please be assured that only sites that can operate within the guidelines are operational. All sites will remain under constant review. We have postponed all face-to-face engagement events and meetings and have put in place a number of channels to communicate with communities, such as letters and phone calls, as well as updates and alerts from each of the local community websites. You can sign up for regular updates in your local area at [www.hs2inbucksandox.co.uk](http://www.hs2inbucksandox.co.uk)

### What we will be doing?

As part of our continuing work ahead of the construction of the railway we need to undertake some further activity in your area. This will consist of:

- Utility surveys
- Preparation works
- Boundary fencing
- Public right of way diversion

### When will these works take place?

These works are planned to start on 22 February 2021 and are expected to take two weeks to complete. The site for the fencing works is located between Ellesborough Road and Bacombe Lane. Access to the site will be from Bacombe Lane.

**If you have a question about HS2 or our works, please contact our HS2 Helpdesk team on 08081 434 434 or email [hs2enquiries@hs2.org.uk](mailto:hs2enquiries@hs2.org.uk)**

## Notification



### Duration of works

The work will start on 22 February 2021 and is estimated to take two weeks to complete

Normal working hours Monday to Friday 8am to 6pm. and Saturday 8am - 1pm. We may also be on site for one hour's start up and shutdown outside of these times

### What to expect

Some additional traffic on local roads. Some noise from equipment used for the work. Site storage and welfare vehicles. Site operated with 24-hour security and temporary flood lighting

### What we will do

Manage any impacts, such as traffic and noise with the aim of reducing or removing them

# Notice of public right of way diversion in Wendover, Ellesborough Road South Field

## Notification



[www.hs2.org.uk](http://www.hs2.org.uk)

### Utility surveys

The utility surveys will involve the use of non-intrusive ground radar scanning of the area to detect the location of any services underground ahead of the fencing works commencing.

### Preparation works

A small workforce will use machinery and hand-held equipment to cut back some foliage around the field perimeter and prepare the ground for the path diversion.

### Site compound

A temporary site compound will be situated at the entrance of Bacombe Lane. The compound is used for welfare vehicles, staff car parking and the storage of site machinery and materials for the workforce completing the works. The site will be secured with 24/7 security and has temporary low-level lighting.

### Public rights of way

The public right of way footpath has previously been diverted in this field and requires further diversion around the opposite side of the field. Winter ground conditions prevent the path being relocated diagonally to its original location. Please see the enclosed map for the diversion route.

Following the completion of the new public right of way diversion the pedestrian route will be diverted and the existing diversion route will then be closed.

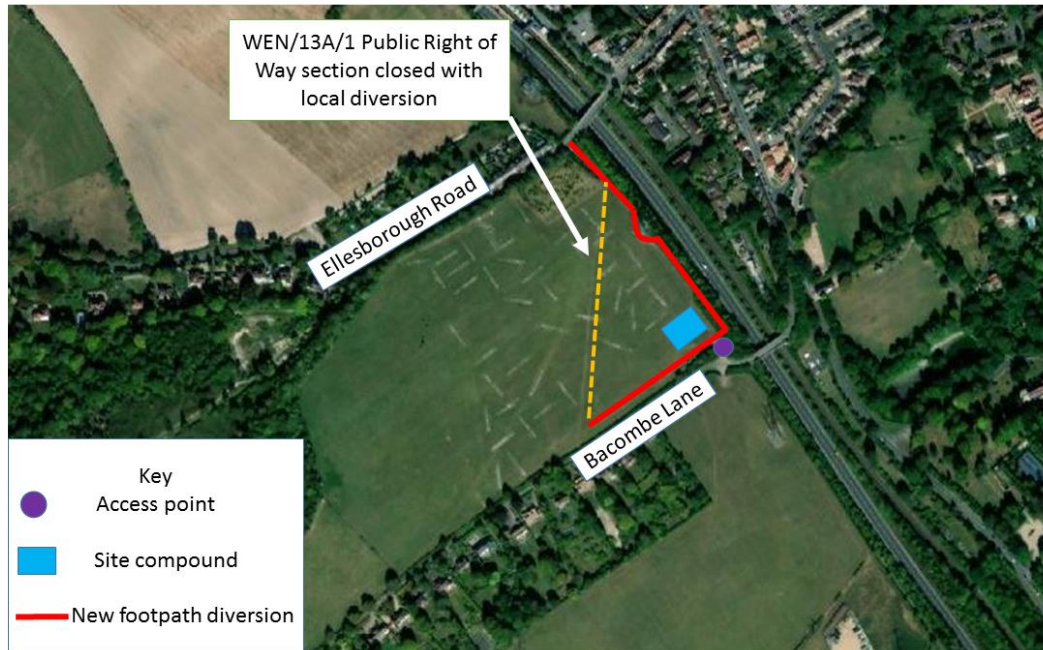
# Notice of public right of way diversion in Wendover, Ellesborough Road South Field

Notification



[www.hs2.org.uk](http://www.hs2.org.uk)

Works location and public rights of way



Contact our HS2 Helpdesk team on **08081 434 434**

# Keeping you informed

We are committed to keeping you informed about work on HS2. This includes ensuring you know what to expect and when to expect it, as well as how we can help.

## Residents' Charter and Commissioner

The Residents' Charter is our promise to communicate as clearly as we possibly can with people who live along or near the HS2 route.  
[www.gov.uk/government/publications/hs2-residents-charter](http://www.gov.uk/government/publications/hs2-residents-charter)

We also have an independent Residents' Commissioner whose job is to make sure we keep to the promises we make in the Charter and to keep it under constant review. Find reports at:  
[www.gov.uk/government/collections/hs2-ltd-residents-commissioner](http://www.gov.uk/government/collections/hs2-ltd-residents-commissioner)

You can contact the Commissioner at:  
[residentscommissioner@hs2.org.uk](mailto:residentscommissioner@hs2.org.uk)

## Construction Commissioner

The Construction Commissioner's role is to mediate and monitor the way in which HS2 Ltd manages and responds to construction complaints. You can contact the Construction Commissioner by emailing:  
[complaints@hs2-cc.org.uk](mailto:complaints@hs2-cc.org.uk)

## Property and compensation

You can find out all about HS2 and properties along the line of route by visiting:  
[www.gov.uk/government/collections/hs2-property](http://www.gov.uk/government/collections/hs2-property)  
Find out if you're eligible for compensation at:  
[www.gov.uk/claim-compensation-if-affected-by-hs2](http://www.gov.uk/claim-compensation-if-affected-by-hs2)

## Holding us to account

If you are unhappy for any reason you can make a complaint by contacting our HS2 Helpdesk team. For more details on our complaints process, please visit our website:  
[www.hs2.org.uk/how-to-complain](http://www.hs2.org.uk/how-to-complain)

## Contact Us

Contact our HS2 Helpdesk team all day, every day of the year on:

 Freephone **08081 434 434**

 Minicom **08081 456 472**

 Email **[hs2enquiries@hs2.org.uk](mailto:hs2enquiries@hs2.org.uk)**

Write to:

**FREEPOST**

**HS2 Community Engagement**

Website **[www.hs2.org.uk](http://www.hs2.org.uk)**

To keep up to date with what is happening in your local area, visit:  
**[www.hs2inyourarea.co.uk](http://www.hs2inyourarea.co.uk)**

**Please contact us if you'd like a free copy of this document in large print, Braille, audio or easy read. You can also contact us for help and information in a different language.**

HS2 Ltd is committed to protecting personal information. If you wish to know more about how we use your personal information please see our Privacy Notice  
<https://www.gov.uk/government/publications/high-speed-two-ltd-privacy-notice>

**Reference number: HS2-MW-Fusion -Ph1-Ar-Ce-C2-OTH-48-02/06/2021 FUS\_AWN\_0176**

High Speed Two (HS2) Limited, registered in England and Wales.

Registered office: Two Snowhill, Snow Hill Queensway, Birmingham B4 6GA.

Company registration number: 06791686. VAT registration number: 888 8512 56.