

Notice of fencing and archaeology works, Wendover

December 2020 | www.hs2.org.uk

Notification



High Speed Two (HS2) is the new high speed railway for Britain. We are continually reviewing the works on our construction sites in line with Government and Public Health England (PHE) advice on dealing with COVID-19. The Government's current strategy makes it clear that construction activity can continue as long as it complies with this guidance. Please be assured that only sites that can operate within the guidelines are operational. All sites will remain under constant review. We have postponed all face-to-face engagement events and meetings and have put in place a number of channels to communicate with communities, such as letters and phone calls, as well as updates and alerts from each of the local community websites. You can sign up for regular updates in your local area at www.hs2inbucksandox.co.uk

What will we be doing?

As part of our continuing works ahead of the construction of the railway we need to undertake some further work in your area, these works will consist of:

- Boundary Fencing
- Localised vegetation clearance for fencing installation
- Archaeological test pit works

Boundary fencing

Our fencing works will continue in January 2021 and will be completed by the end of March 2021. For this stage of works we will not be closing any Public Rights of Way, but we will need to occasionally cross over them with machinery to access working areas. To ensure this happens safely we will have marshals in place who will suspend pedestrian access temporarily while the machinery passes through.

The fencing work will take place at multiple locations in the Wendover area. Please see the map enclosed.

If you have a question about HS2 or our works, please contact our HS2 Helpdesk team on 08081 434 434 or email hs2enquiries@hs2.org.uk

Duration of works

Works will take place between January 2020 and complete by the end of March 2021

Normal working hours Monday to Friday 8am to 6pm and Saturday 8am - 1pm. We may also be on site for one hour's start up and shutdown outside of these times

What to expect

Some additional traffic on local roads and noise from equipment. Site storage and welfare vehicles operating from an established compound alongside the A413 Wendover bypass

What we will do

Manage any impacts, such as traffic and noise with the aim of reducing or removing them

Notice of fencing and archaeology works, Wendover

www.hs2.org.uk

Notification



Localised vegetation clearance

Localised vegetation clearance will need to be undertaken in preparation to construct the railway and to gain local access to land to undertake the fencing and archaeology. The clearance will be completed under the instructions of the ecologist on site, who decides the appropriate methods based on the vegetation present. If it is found that the area is clear of ecology, the works will be allowed to take place. These works will take place between mid-November 2020 until March 2021.

Test pit archaeology

We will begin our investigations in the areas shown on the map enclosed. This will require the excavation of a small number of test pits and trial trenches. The investigations will be undertaken by a team of archaeologists using small vehicle towed mechanical excavators and hand tools. There will be archaeologists, plant operators and a management team on site operating out of mobile welfare vans. In addition, a small number of supervision staff will be visiting the site to ensure the work is progressing to plan and is being done safely. Once the work is complete, the soil will be backfilled.

How will we be accessing the site?

Access to the sites will be off the A413 and Nash Lee Road. Temporary verge access signage will be installed on the highway verge approaching the entrance to the sites along this route. These will be on standard signage A-Frames and secured with ballasted sandbags which will be placed on the roadside verges. These will be in place for the duration of the works. The works will be undertaken using mobile welfare facilities. Additional welfare services and workforce parking will be provided at our established compound located off the A413 Wendover bypass.

How will this affect me?

There will be a visible increase in site vehicles during the set up and closing of the works. There may be some noise from the machinery, which will be restricted to running between the hours of 8am and 6pm Monday to Friday.

Notice of fencing and archaeology works, Wendover

Notification



www.hs2.org.uk

Map of archaeology test pit works areas



Contact our HS2 Helpdesk team on **08081 434 434**

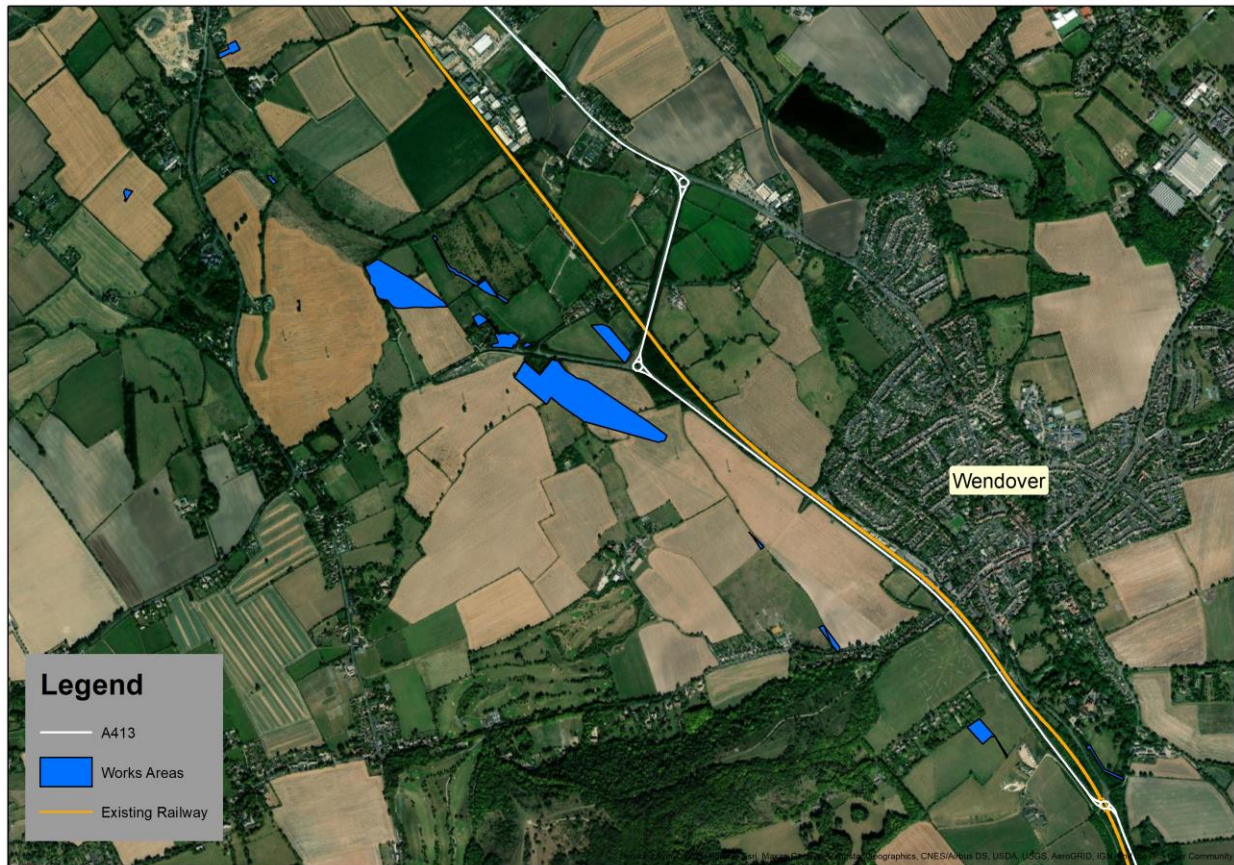
Notice of fencing and archaeology works, Wendover

Notification



www.hs2.org.uk

Map of fencing works areas



Contact our HS2 Helpdesk team on **08081 434 434**

What else is happening in your area?

www.hs2.org.uk

Contact our new HS2 Helpdesk team

Our new Helpdesk team is based in our Head Office in Birmingham. This is so that we can provide you with the best service possible. Our team is here to listen and respond to your enquiry, complaint or feedback to help us be a good neighbour.

You can contact our Helpdesk team all day, every day of the year on:

Freephone: **08081 434 434**

Minicom: **08081 456 472**

Email: hs2enquiries@hs2.org.uk

Keep up-to-date with your local community website

To find out more about what's happening in your area and receive regular email updates, you can sign up to our local community websites at: www.hs2inyourarea.co.uk.

About our Community and Business Funds

We are offering two funds that are available to local communities and businesses between the West Midlands and London, to help with the disruption caused by our construction work. These are the Community and Environment Fund (CEF) and the Business and Local Economy Fund (BLEF).

The CEF is designed to give communities the opportunity to share in the benefits of HS2. It is an allocated fund that communities are able to apply for, to help to support local projects that aim to improve their local area.

The BLEF is designed to support local economies that may be disrupted by the construction of HS2. BLEF grants are for local business support organisations and local authorities to help maintain business activity in local communities.

For more information about each of these funds, including how to apply, please visit: <https://www.groundwork.org.uk/hs2funds>



Keeping you informed

We are committed to keeping you informed about work on HS2. This includes ensuring you know what to expect and when to expect it, as well as how we can help.

Residents' Charter and Commissioner

The Residents' Charter is our promise to communicate as clearly as we possibly can with people who live along or near the HS2 route.
www.gov.uk/government/publications/hs2-residents-charter

We also have an independent Residents' Commissioner whose job is to make sure we keep to the promises we make in the Charter and to keep it under constant review. Find reports at:
www.gov.uk/government/collections/hs2-ltd-residents-commissioner

You can contact the Commissioner at:
residentscommissioner@hs2.org.uk

Construction Commissioner

The Construction Commissioner's role is to mediate and monitor the way in which HS2 Ltd manages and responds to construction complaints. You can contact the Construction Commissioner by emailing:
complaints@hs2-cc.org.uk

Property and compensation

You can find out all about HS2 and properties along the line of route by visiting:
www.gov.uk/government/collections/hs2-property
Find out if you're eligible for compensation at:
www.gov.uk/claim-compensation-if-affected-by-hs2

Holding us to account

If you are unhappy for any reason you can make a complaint by contacting our HS2 Helpdesk team. For more details on our complaints process, please visit our website:
www.hs2.org.uk/how-to-complain

Contact Us

Contact our HS2 Helpdesk team all day, every day of the year on:

 Freephone **08081 434 434**

 Minicom **08081 456 472**

 Email **hs2enquiries@hs2.org.uk**

Write to:

FREEPOST

HS2 Community Engagement

Website **www.hs2.org.uk**

To keep up to date with what is happening in your local area, visit:
www.hs2inyourarea.co.uk

Please contact us if you'd like a free copy of this document in large print, Braille, audio or easy read. You can also contact us for help and information in a different language.

HS2 Ltd is committed to protecting personal information. If you wish to know more about how we use your personal information please see our Privacy Notice
<https://www.gov.uk/government/publications/high-speed-two-ltd-privacy-notice>

Reference number: HS2-EWFusion -Ph1-Ar-Ce-C2-OTH-3-25/11/2020 FUS_AWN_0151

High Speed Two (HS2) Limited, registered in England and Wales.
Registered office: Two Snowhill, Snow Hill Queensway, Birmingham B4 6GA.
Company registration number: 06791686. VAT registration number: 888 8512 56.