

Notice of archaeological works, St Marys Church

August 2020 | www.hs2.org.uk

High Speed Two (HS2) is the new high speed railway for Britain. We are continually reviewing the works on our construction sites in line with Government and Public Health England (PHE) advice on dealing with COVID-19. The Government's current strategy makes it clear that construction activity can continue as long as it complies with this guidance. Please be assured that only sites that can operate within the guidelines are operational. All sites will remain under constant review. We have postponed all face-to-face engagement events and meetings and have put in place a number of channels to communicate with communities, such as letters and phone calls, as well as updates and alerts from each of the local community websites. You can sign up for regular updates in your local area at www.hs2inbucksandox.co.uk

Further to our last newsletter which gave details of work due to take place in your area, the notification gives details of all the activities regarding the archaeological work.

What are we doing?

Following the construction of the bell mouth off Risborough Road we will need to access the site at St Marys Church to exhume approx. 3,000 human remains that have been identified in prior survey work.

In order to do this, we will need to complete the following stages ahead of the archaeological dig.

- Utility diversion work (Vodafone)
- Construction of a temporary access road to St Marys Church including temporary bridges
- Construction of a temporary site compound
- Construction of a temporary structure that will cover the burial site
- Removal of work temporary building, access road and compound

If you have a question about HS2 or our works, please contact our HS2 Helpdesk team on 08081 434 434 or email hs2enquiries@hs2.org.uk

Notification



Duration of works

Works will begin early September 2020 and be completed during summer 2021

What to expect

Construction of temporary access road, structures and bridges

Site compound manned 24/7 with security lighting

Single lane traffic management is required with temporary traffic lights control during the utility diversion works and the bell mouth construction

What we will do

Some additional traffic on the local road and noise from the plant equipment used for the works

Notice of archaeological works, St Marys Church

www.hs2.org.uk

Notification



Construction of temporary site compound

A temporary site compound will be constructed to provide access for the workforce. This will include welfare facilities and will be additionally be used as an area to process the archaeological works that are to be carried out by the archaeological subcontractor. Work will begin early September 2020.

The compound will consist of:

- 24/7 Site security
- Lighting
- Welfare facilities
- Workforce car park
- Storage of materials and machinery

Please see enclosed map for location details.

Construction of temporary access road to St Marys Church

A temporary access road will need to be constructed to allow access for vehicles associated with the archaeological works. Work to construct the temporary road will start in October 2020. The road will extend for 400m from the bell mouth to the site and the access road will be 3.6m wide. Due to 3 watercourses we will need to install temporary crossings (bridges) to allow access to the site. The crossings are made of twin walled pipe plastic pipe, gravel & sand bags.

Please see map enclosed.

Construction of a temporary structure that will cover the burial site continued

We will need to install several 20ft container cabins which will be used for processing and storage of human remains and artefacts.

As part of the conditions to carry out these works, we need to build a temporary structure that will protect the site whilst works are ongoing. This provides a safe and respectful place for the remains to handled. The structure will be 50mx80m and the building will begin in January 2021.

Please see enclosed map for location details.

Notice of archaeological works, St Marys Church

www.hs2.org.uk

Notification



Community events

As part of our commitment to the local community we intend to hold events and activities to share with stakeholder groups and local/national archaeological groups this may include:

Visits to local schools and educational institutions

Presentations to key groups in the local community

Site open days/weekends

Monthly drop-in clinics held at the local community centre for people to raise concerns or to ask questions

All these activities will take place adhering to the Government Covid 19 guidance. We will be in touch in the future to tell you how you can get involved.

Removal of temporary access road and structures

The work in this area is for the sole purpose undertaking the archaeological works. Once the work has been completed all compounds, structures, bridges and access road relating to these works will be removed from site and the land returned to its original state.

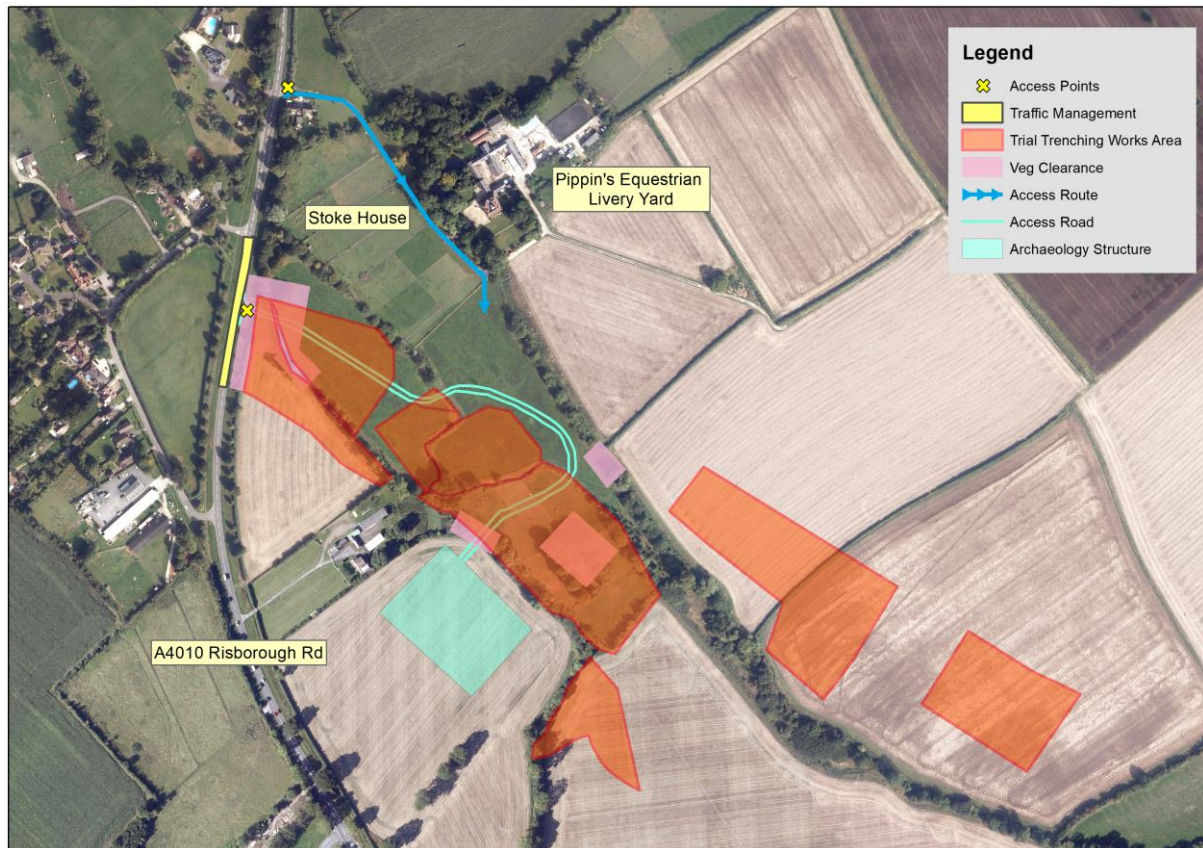
Notice of archaeological works, St Marys Church

Notification



www.hs2.org.uk

Location of temporary access road, bridges and site compound (off Risborough Road Stoke Mandeville)



Contact our HS2 Helpdesk team on **08081 434 434**

Notice of archaeological works, St Marys Church

Notification



www.hs2.org.uk

Example of temporary archaeology structure

Scaffold system used at Bedlam excavation, Liverpool Street



Contact our HS2 Helpdesk team on **08081 434 434**

Keeping you informed

We are committed to keeping you informed about work on HS2. This includes ensuring you know what to expect and when to expect it, as well as how we can help.

Residents' Charter and Commissioner

The Residents' Charter is our promise to communicate as clearly as we possibly can with people who live along or near the HS2 route.
www.gov.uk/government/publications/hs2-residents-charter

We also have an independent Residents' Commissioner whose job is to make sure we keep to the promises we make in the Charter and to keep it under constant review. Find reports at:
www.gov.uk/government/collections/hs2-ltd-residents-commissioner

You can contact the Commissioner at:
residentscommissioner@hs2.org.uk

Construction Commissioner

The Construction Commissioner's role is to mediate and monitor the way in which HS2 Ltd manages and responds to construction complaints. You can contact the Construction Commissioner by emailing:
complaints@hs2-cc.org.uk

Property and compensation

You can find out all about HS2 and properties along the line of route by visiting:
www.gov.uk/government/collections/hs2-property
Find out if you're eligible for compensation at:
www.gov.uk/claim-compensation-if-affected-by-hs2

Holding us to account

If you are unhappy for any reason you can make a complaint by contacting our HS2 Helpdesk team. For more details on our complaints process, please visit our website:
www.hs2.org.uk/how-to-complain

Contact Us

Contact our HS2 Helpdesk team all day, every day of the year on:

 Freephone **08081 434 434**

 Minicom **08081 456 472**

 Email **hs2enquiries@hs2.org.uk**

Write to:

FREEPOST

HS2 Community Engagement

Website **www.hs2.org.uk**

To keep up to date with what is happening in your local area, visit:
www.hs2inyourarea.co.uk

Please contact us if you'd like a free copy of this document in large print, Braille, audio or easy read. You can also contact us for help and information in a different language.

HS2 Ltd is committed to protecting personal information. If you wish to know more about how we use your personal information please see our Privacy Notice
<https://www.gov.uk/government/publications/high-speed-two-ltd-privacy-notice>

Reference number: FUS_ 100

HS2-EW-FUS-Ph1-Ar-Ce-C2-Prog-works-23-08/03/2020

High Speed Two (HS2) Limited, registered in England and Wales.

Registered office: Two Snowhill, Snow Hill Queensway, Birmingham B4 6GA.

Company registration number: 06791686. VAT registration number: 888 8512 56.