

## Notice of archaeology and bat house works, South Heath

December 2020 | [www.hs2.org.uk](http://www.hs2.org.uk)

High Speed Two (HS2) is the new high speed railway for Britain. We are continually reviewing the works on our construction sites in line with Government and Public Health England (PHE) advice on dealing with COVID-19. The Government's current strategy makes it clear that construction activity can continue as long as it complies with this guidance. Please be assured that only sites that can operate within the guidelines are operational. All sites will remain under constant review. We have postponed all face-to-face engagement events and meetings and have put in place a number of channels to communicate with communities, such as letters and phone calls, as well as updates and alerts from each of the local community websites. You can sign up for regular updates in your local area at [www.hs2inbucksandox.co.uk](http://www.hs2inbucksandox.co.uk)

### What we will be doing?

As part of our continuing works ahead of the construction of the railway we need to undertake some further work in your area, these works will consist of:

- Establish two small local welfare facilities
- Preparation Works
- Boundary Fencing
- Utility Surveys
- Archaeology
- Bat House construction

These works are planned to begin early January 2021 and will be complete by spring 2021. Primary access will be via the A413 and internal haul access road off the Great Missenden roundabout. There will also be one access point via Potter Row which will accommodate mobile welfare vehicles for a small amount of local archaeology and fencing works. The bat house construction works and majority of the archaeology and fencing works will utilise the A413 direct access.

**If you have a question about HS2 or our works, please contact our HS2 Helpdesk team on 08081 434 434 or email [hs2enquiries@hs2.org.uk](mailto:hs2enquiries@hs2.org.uk)**

### Notification



#### Duration of works

Works begin in January 2021 until spring 2021

Normal working hours:

Monday to Friday 8am – 6pm and Saturdays 8am – 1pm. We may also be on site for one hour's start up and shutdown outside of these times

#### What to expect

Small amount of additional traffic on local roads. Noise from the equipment used for the works.

Site storage and welfare vehicle operated with 24hr security and low level lighting.

Traffic management signage near our site entrance.

#### What we will do

Manage any impacts such as traffic and noise with the aim of reducing them.

# Notice of archaeology and bat house works, South Heath

Notification



[www.hs2.org.uk](http://www.hs2.org.uk)

## Site welfare

To enable us to carry out the works, we will need to construct a small welfare compound and lay temporary field trackway matting, please see enclosed map. We will be using mobile welfare facilities to undertake the fencing and archaeological works. A small works compound, welfare and office will be established for the bat house construction. Once these works are completed, we will then remove from the site in Spring 2021. Our establishment will include:

- Additional temporary trackway
- Office and welfare facilities alongside a small storage area of machinery and materials for the bat house construction
- An additional small welfare facility for the archaeology
- Car parking for a small workforce and 24-hour security with temporary low level lighting

## Utility surveys

The utility surveys will involve the use of non-intrusive ground radar scanning of the area to detect the location of any services underground ahead of the works commencing.

## Preparation works

A small workforce will use machinery and hand-held equipment to trim small areas of hedgerow and foliage around the access points and areas necessary for archaeological excavation.

## Installation of boundary fencing

Agricultural style boundary fencing will be installed.

## Archaeology

We will begin our investigations in the areas shown on the map enclosed. This will require the excavation of approximately 450 test pits and 2 mitigation areas totalling 0.69 hectares. The investigations will be undertaken by teams of archaeologists using small mechanical excavators and hand tools. There will be archaeologists, plant operators and a management team on site. In addition, a small number of supervision staff will be visiting the site to ensure the work is progressing to plan and is being done safely. Once the work is complete, the soil will be backfilled. Access for the northern most archaeological test pit site will require the use of Potter Row. Vehicle movements will be limited to a small vehicle towed excavator, mobile welfare vans and the fencing install equipment / materials. The small workforce number of work force will utilise parking accessed direct from the A413 access road.

Contact our HS2 Helpdesk team on **08081 434 434**

# Notice of archaeology and bat house works, South Heath

Notification



[www.hs2.org.uk](http://www.hs2.org.uk)

## Bat house construction

Our ecology surveys identified that local HS2 owned properties are used by bats as a roost site. As we need to demolish these buildings ahead of the construction of the railway, a new bat house will be built to accommodate these bats.

This new bat house design has been approved by the local authority and considers the subsequent requirements of the bat licence. A further community notice will be issued ahead of the demolition works.

The construction of the bat house comprises of the following:

- Single storey pitched tiled roof building
- Approximately 10m height x 10m length x 10m width
- Brick construction, clad with timber sympathetic to the local architecture
- The building is designed to mitigate for the bat species surveyed in the area containing a variety of roost types for the bats to choose from

The works commencing January 2021 will include:

- Excavation and installation of foundations for the bat house
- Construction and completion of the building by spring 2021

The bat house will be constructed within a pre identified and segregated area within the Park Hill habitat mitigation site. Access to the work site will be via the HS2 internal access road directly from the A413.

## How may this affect you?

We will be working hard to ensure any impacts on residents are kept to a minimum during these and all our future works. You may notice a little extra traffic on the road immediately around the sites with workers moving to and from the site, and occasional delivery vehicles.

There may be some noise from the machinery. All machinery will be restricted to running between the hours of 8am and 6pm Monday to Friday and 8am to 1pm on a Saturday. For further updates about these works and HS2 in general, please visit [www.hs2inbucksandbox.co.uk](http://www.hs2inbucksandbox.co.uk) where you can sign up to news alerts.

# Notice of archaeology and bat house works, South Heath

[www.hs2.org.uk](http://www.hs2.org.uk)

Notification



## What works will be taking place?

Work being undertaken as part of the construction of the bat house is detailed below;

Activity	Detail
Foundations	Works to set out the area of the building, excavate and concrete the foundations
Construction of walls and structure	Works to include building the exterior of the bat building and installation of the walls and floor. This includes brickwork, scaffolding and timberwork.
Roof construction	Planned works are to install the tiled roof of the bat building. Works would include transport of materials to the structure, fixing of underfelt and battens to the roof structure, laying of tiles including mortar work and cutting.
Internal work	The internal elements of the structure include timber partitioning, internal slabbing and bat roost facilities. Materials will be delivered to the compound and transported to the bat house area when required. Most of the work is to be done by hand.

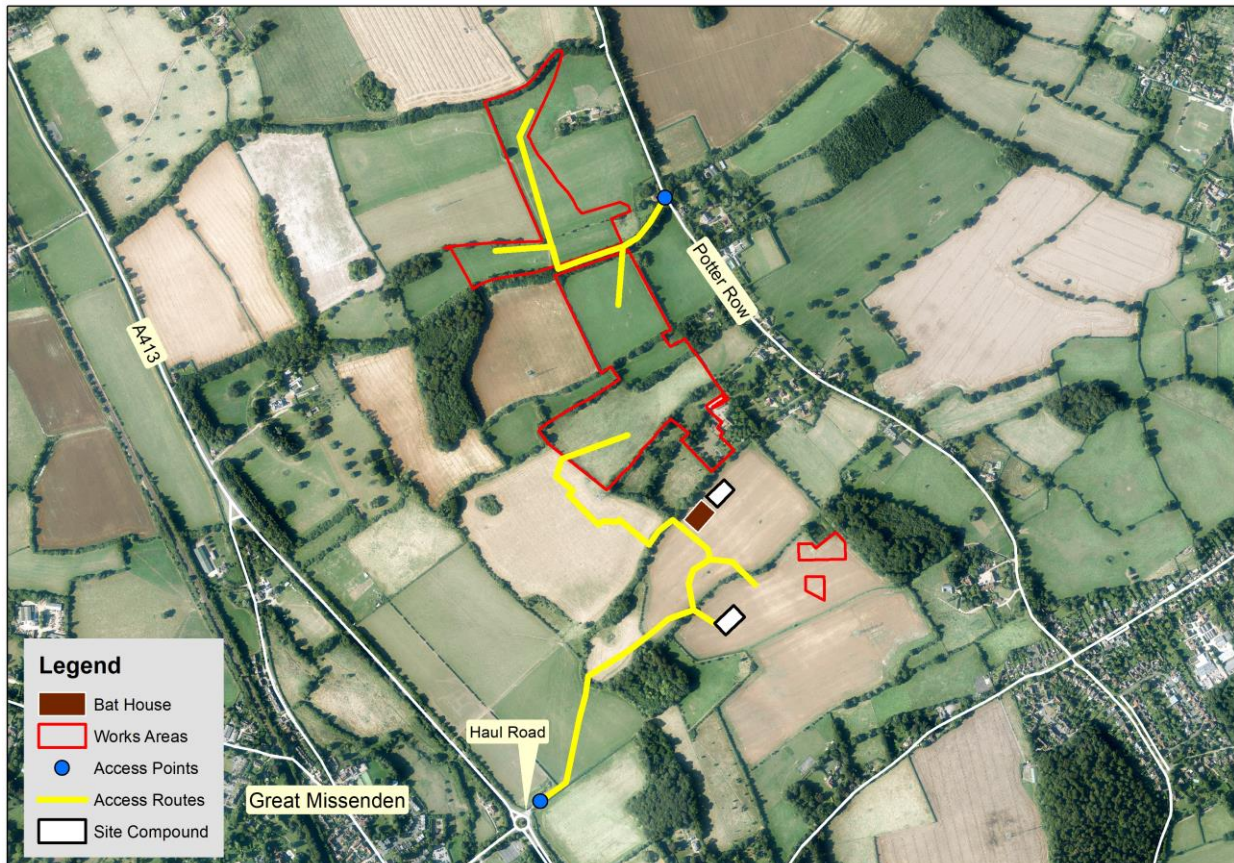
# Notice of archaeology and bat house works, South Heath

Notification



[www.hs2.org.uk](http://www.hs2.org.uk)

Map of works areas, compound and access points



Contact our HS2 Helpdesk team on **08081 434 434**



# Keeping you informed

We are committed to keeping you informed about work on HS2. This includes ensuring you know what to expect and when to expect it, as well as how we can help.

## Residents' Charter and Commissioner

The Residents' Charter is our promise to communicate as clearly as we possibly can with people who live along or near the HS2 route.  
[www.gov.uk/government/publications/hs2-residents-charter](http://www.gov.uk/government/publications/hs2-residents-charter)

We also have an independent Residents' Commissioner whose job is to make sure we keep to the promises we make in the Charter and to keep it under constant review. Find reports at:  
[www.gov.uk/government/collections/hs2-ltd-residents-commissioner](http://www.gov.uk/government/collections/hs2-ltd-residents-commissioner)

You can contact the Commissioner at:  
[residentscommissioner@hs2.org.uk](mailto:residentscommissioner@hs2.org.uk)

## Construction Commissioner

The Construction Commissioner's role is to mediate and monitor the way in which HS2 Ltd manages and responds to construction complaints. You can contact the Construction Commissioner by emailing:  
[complaints@hs2-cc.org.uk](mailto:complaints@hs2-cc.org.uk)

## Property and compensation

You can find out all about HS2 and properties along the line of route by visiting:  
[www.gov.uk/government/collections/hs2-property](http://www.gov.uk/government/collections/hs2-property)  
Find out if you're eligible for compensation at:  
[www.gov.uk/claim-compensation-if-affected-by-hs2](http://www.gov.uk/claim-compensation-if-affected-by-hs2)

## Holding us to account

If you are unhappy for any reason you can make a complaint by contacting our HS2 Helpdesk team. For more details on our complaints process, please visit our website:  
[www.hs2.org.uk/how-to-complain](http://www.hs2.org.uk/how-to-complain)

## Contact Us

Contact our HS2 Helpdesk team all day, every day of the year on:

 Freephone **08081 434 434**

 Minicom **08081 456 472**

 Email **[hs2enquiries@hs2.org.uk](mailto:hs2enquiries@hs2.org.uk)**

Write to:

**FREEPOST**

**HS2 Community Engagement**

Website **[www.hs2.org.uk](http://www.hs2.org.uk)**

To keep up to date with what is happening in your local area, visit:  
**[www.hs2inyourarea.co.uk](http://www.hs2inyourarea.co.uk)**

**Please contact us if you'd like a free copy of this document in large print, Braille, audio or easy read. You can also contact us for help and information in a different language.**

HS2 Ltd is committed to protecting personal information. If you wish to know more about how we use your personal information please see our Privacy Notice  
<https://www.gov.uk/government/publications/high-speed-two-ltd-privacy-notice>

**Reference number: FUS\_AWN\_0152HS2-EWFusion -Ph1-Ar-Ce-C2-OTH-3-25/11/2020**

High Speed Two (HS2) Limited, registered in England and Wales.

Registered office: Two Snowhill, Snow Hill Queensway, Birmingham B4 6GA.

Company registration number: 06791686. VAT registration number: 888 8512 56.