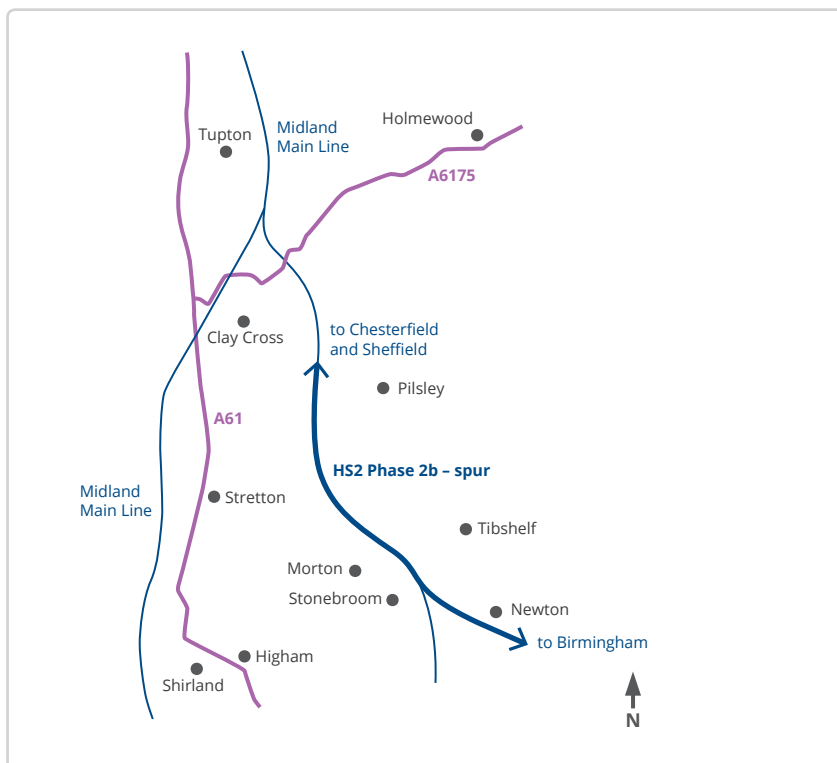


## In your area

### Stonebroom to Clay Cross | LA09



High Speed Two (HS2) is the Government's planned new high speed railway. High Speed Two Limited is the company responsible for developing and promoting the UK's new high speed rail network. In July 2017, the Government confirmed the route for the next phase of HS2: Crewe – Manchester and West Midlands – Leeds (Phase 2b).

### Introduction

This information has been produced by HS2 Ltd to update you about the route from Stonebroom to Clay Cross. It includes:

- a summary of the proposed route in your area and how the design has developed since July 2017;
- what we are currently working on and what we will be consulting on later in the year;
- the benefits that HS2 will bring to your area;
- how to find out more about the project; and
- how to get in touch with us.



## The route of the proposed scheme from Stonebroom to Clay Cross

The Stonebroom to Clay Cross community area covers approximately 5.2km of the proposed HS2 spur towards Chesterfield and Sheffield. This section of the route passes to the west of Newton and Tibshelf, heading in a north westerly direction through Doe Hill Country Park before converging with the Erewash Valley railway line to the east of Morton and Stonebroom. It eventually connects to the Midland Mainline at a junction north of Clay Cross.

The route within this area lies within the Bolsover District and North East Derbyshire local authority areas.

The main features in of the route in this area begin with a 325m long embankment accommodating a local diversion to the Silverhill Trail and associated cycle route. As the level of the land changes, the proposed route would enter an 800m long cutting to the south of Doe Hill Country Park. Continuing north, a 500m embankment will connect to the existing Erewash Valley Line embankment south of Station Road.

For the remainder of the section the proposed route runs alongside and then in a shared corridor with the Erewash Valley Network Rail line.

### Design development

Since the community information events in September 2017, we have continued to develop our design for the railway, which will be included in the working draft Environmental Statement that you will have an opportunity to give feedback on later this year.

We have also produced detailed maps showing the evolving design that includes construction compounds, road realignments and public rights of way. These show our work in progress and are likely to be refined or changed before we publish them as part of a consultation later in the year. To view the maps, please visit [www.hs2.org.uk/building-hs2/building-the-line/phase-2b/mid-2018-information-events](http://www.hs2.org.uk/building-hs2/building-the-line/phase-2b/mid-2018-information-events).

It is our intent to maintain access and limit disruption to roads, there are likely to be local diversions including Doe Hill and Pilsley Road. There will also be some disruption to Alfreton Road, between the Silverhill Trail and Doe Hill Country Park, during construction of a new bridge over the road.

We have engaged with the Friends of Doe Hill Country Park, Derbyshire Wildlife Trust and other stakeholders in the area about how access to the Park can be maintained for local communities and visitors.

An autotransformer station, which is a piece of infrastructure needed to power the railway, will be located in the old railway cutting south of Alfreton Road. The bridleway in this area will be diverted to the Silverhill Trail and pass beneath the railway in tunnel.



Bringing the benefits of HS2 to the Midlands and the North will play a critical role in rebalancing the national economy and provide the potential to create substantial opportunities to boost skills and create employment in the East Midlands region.

**Councillor Jon Collins**  
**Chair of the East Midlands Strategic Board**

Independent research has shown that HS2 Phase 2 will create about 74,000 jobs during and post-construction and be worth about £4bn GVA to the East Midlands and South Yorkshire within ten years of services starting.

**Scott Knowles**  
**Chief Executive at East Midlands Chamber of Commerce**

## Environmental Impact Assessment

As part of the development of the Phase 2b proposed scheme, we are carrying out an Environmental Impact Assessment that will identify the likely significant effects of the construction and operation of the railway and the means to reduce or avoid such effects. This will be reported in our Environmental Statement, which will accompany the hybrid Bill that we expect to deposit in Parliament in late 2019.

For the purposes of reporting the findings of the Environmental Impact Assessment the Phase 2b route has been divided into 26 'community areas', of which Stonebroom to Clay Cross is one (reference LA09). The working draft and formal Environmental Statement will have a detailed report for each community area. This will include an assessment of the local environment and likely significant effects of the proposed scheme, suggested methods of reducing or avoiding those effects, and the proposals for monitoring our impact during construction and operation.

As part of the Environmental Impact Assessment process, we are carrying out surveys to better understand the current local environment including noise conditions and ecology. We have also been engaging with local authorities, parish councils and other statutory bodies to collect information and local knowledge. More information about our survey work can be found online at: [www.gov.uk/government/publications/a-guide-to-environmental-surveys-being-carried-out-by-hs2](http://www.gov.uk/government/publications/a-guide-to-environmental-surveys-being-carried-out-by-hs2)

### Future consultations

Later in the year, we will consult on a working draft of the Environmental Statement. This will be an opportunity to see and comment on our work in progress. Parliament does not require us to consult on a draft of the document; however we believe it is important for communities and stakeholders to have a formal opportunity, to understand the progress of our work and provide feedback at this stage.

This will also be accompanied by the working draft Equality Impact Assessment, which identifies people with protected characteristics that may be disproportionately affected and any action that may be necessary to limit such effects. Feedback to these consultations will be considered in the development of the proposed scheme presented to Parliament.



## National College for High Speed Rail

The newly opened National College for High Speed Rail will play a key role in generating the workforce of the future, designing and building the UK's new high speed rail network and future infrastructure projects including HS2. With state-of-the-art facilities in Birmingham and Doncaster, the college offers courses and apprenticeships in all elements of the rail industry whether leaving school, wanting to up-skill, or take a new career direction. HS2 alone is set to create 25,000 new jobs, including 2,000 apprenticeships, and careers in this industry are set to become more and more sought after.

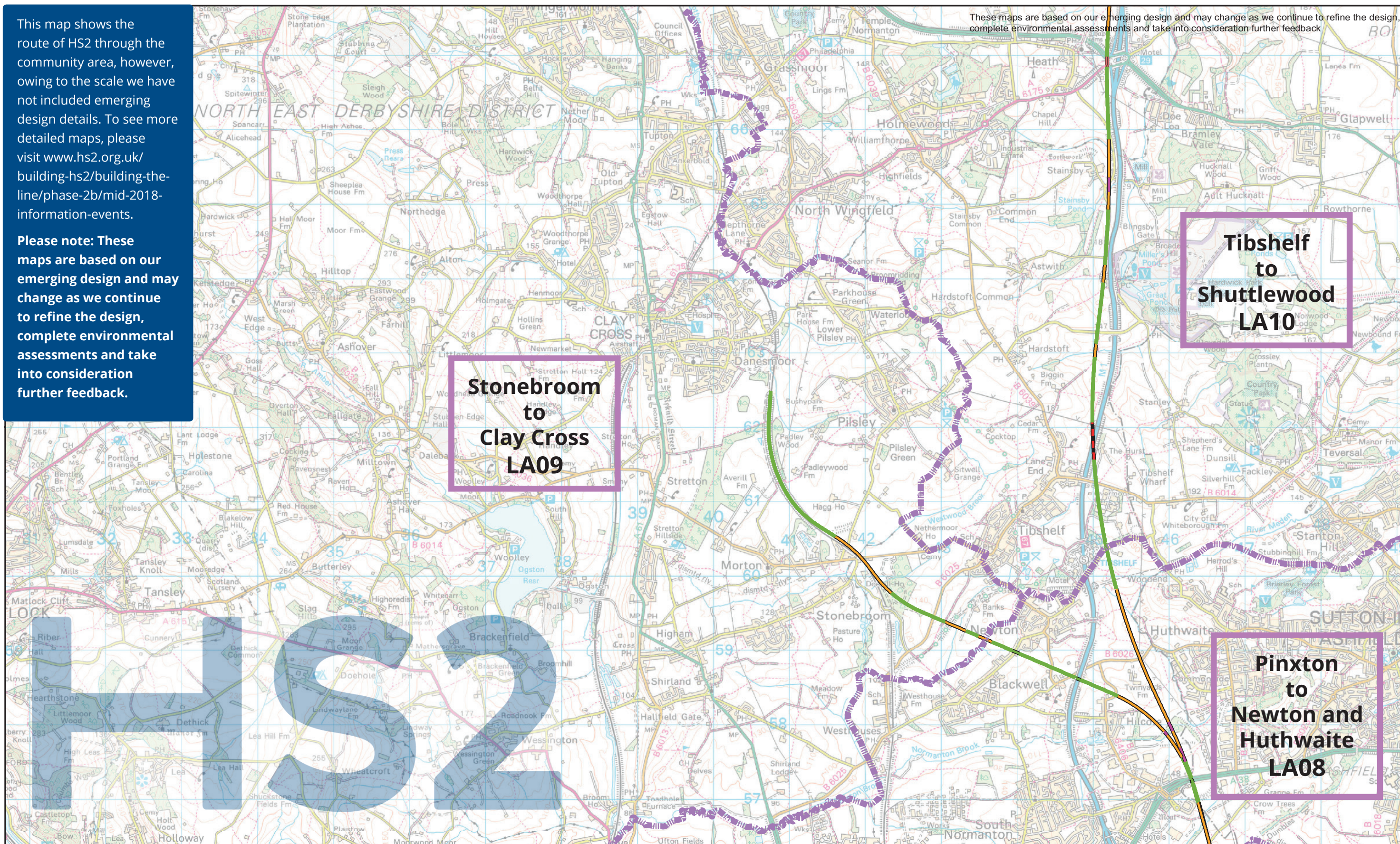
If you would like further information, or to apply, visit the college website [www.nchsr.ac.uk/](http://www.nchsr.ac.uk/) call the college on 0330 120 0375 or email on [enquiries@nchsr.ac.uk](mailto:enquiries@nchsr.ac.uk)



This map shows the route of HS2 through the community area, however, owing to the scale we have not included emerging design details. To see more detailed maps, please visit [www.hs2.org.uk/building-hs2/building-the-line/phase-2b/mid-2018-information-events](http://www.hs2.org.uk/building-hs2/building-the-line/phase-2b/mid-2018-information-events).

Please note: These maps are based on our emerging design and may change as we continue to refine the design, complete environmental assessments and take into consideration further feedback.

These maps are based on our emerging design and may change as we continue to refine the design, complete environmental assessments and take into consideration further feedback



**Tibshelf  
to  
Shuttlewood  
LA10**

**Stonebroom  
to  
Clay Cross  
LA09**

**Pinxton  
to  
Newton and  
Huthwaite  
LA08**

High Speed Two Phase 2b  
Community area map June 2018

Stonebroom to Clay Cross  
LA09

Published

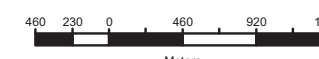
**HS2**

Registered in England. Registration number 06791686.  
Registered office: 2 Snowhill, Queensway, Birmingham B4 6GA

© Crown copyright and database rights 2018.  
OS 100049190

Scale at A3: 1:45,000

Doc Number: HS2-HS2-SE-MAP-000-000009

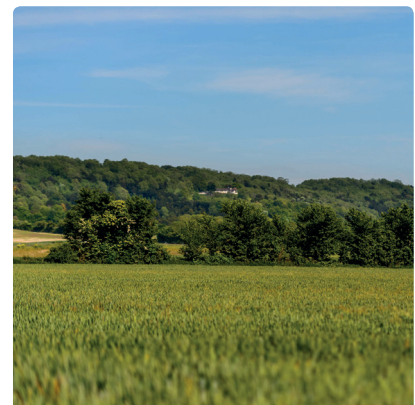


Date: 29/05/18



## The benefits of HS2 in your region

- This section is the spur which HS2 will use to serve Chesterfield and Sheffield. Providing economic and rail benefits for Derbyshire. This includes increased capacity, including more freight on existing lines, more seats on services from Chesterfield, Sheffield and a new station at Toton and reduced journey times to Birmingham, Sheffield, Leeds and on the wider national rail network.
- Over 520 companies in the Midlands have already been awarded work on HS2, either directly or through its supply chain, and HS2 Ltd has engaged with more than 1,400 businesses in the Midlands on potential opportunities.
- 140 businesses from across the Midlands, 73% of which were small and medium-sized enterprises, met with HS2 Ltd's direct contractors at our largest supply chain engagement event to date on 10 May 2018.
- HS2 offers faster, more frequent and more reliable travel between cities and regions of the UK and will increase capacity on our congested railways. Journeys between the East Midlands and Birmingham will take just 20 minutes on HS2 services, bypassing congested roads and slow existing rail links.
- HS2 will allow businesses across the Midlands to collaborate with supply chains and research and development partners, draw on a deeper pool of skills, access new sources of finance and support networks, and secure new customers in regions across Britain.
- East Midlands Airport will be accessible to city regions from Newcastle to London via onward connections from the HS2 East Midlands Hub station. This will increase the catchment area of these airports, allowing the airports to provide more frequent flights and offer a wider choice of destinations for businesses based in the Midlands.
- HS2 will also provide fast, frequent and reliable services from the East and West Midlands to the HS2 station at Old Oak Common in West London, from where Heathrow Airport will be a short interchange away.
- HS2 will also offer graduates greater opportunities to build a career in the East Midlands by providing fast, frequent and reliable access to job opportunities in a broader network of places without the need to relocate.



### Factsheets

HS2 Ltd has published factsheets that explain how we intend to manage areas of concern and minimise impacts on the environment.

These factsheets can be found online at: [www.hs2.org.uk/building-hs2/building-the-line/phase-2b/mid-2018-information-events](http://www.hs2.org.uk/building-hs2/building-the-line/phase-2b/mid-2018-information-events)

## What is HS2?

HS2 is the largest infrastructure project in Europe and the most advanced railway ever built in the UK. It is a catalyst for growth – revitalising the country, creating new opportunities for jobs and skills, regenerating towns and cities, and bringing the nation closer together. It will increase capacity on our railways and improve connectivity between eight of Britain's ten biggest cities. It will run between London and Birmingham (Phase One) from 2026, extend to Crewe (Phase 2a) by 2027 and then link to Manchester, Leeds and further north from 2033 (Phase 2b). Once completed HS2 will travel to over 25 stations and serve 30 million people across Britain.

## Why do we need HS2?

The future prosperity of the UK depends on a modern, strong and growing economy which enables us to compete on the international stage. Good rail links are essential for a strong economy, making it easier to import and export goods, for people to do business and to get to work.

HS2 will not only reduce journey times, it will provide more capacity for local, regional and freight services on the current network, relieving congestion and providing better travel options. By transforming journey times, HS2 will bring more opportunities within closer reach for employment, business, leisure and education.

## What is the process for building HS2?

We have legal powers from Parliament to construct Phase One and must now gain approval to build the route from the West Midlands to Leeds and Manchester (Phase Two). On 17 July 2017 the Secretary of State for Transport confirmed the route for Phase 2b, and we are now preparing the documentation, known as the Phase 2b hybrid Bill, ready for submission to Parliament in 2019.

Submitting a hybrid Bill to Parliament is how the Government gains permission to build this nationally important infrastructure. As part of the Parliamentary process we will consult with the public on various aspects of the proposals. This is a real opportunity for communities to get involved and contribute to helping design the railway. In addition, people whose property or interests are specially and directly affected by the Bill can petition the Parliamentary committee considering the legislation, which can result in changes to the Bill.



## Next steps

### 2017 – 2019

Carry out Environmental Impact Assessment

### Late 2018

Consultation on the working draft Environmental Statement and working draft Equality Impact Assessment

### 2019

Deposit hybrid Bill for Phase 2b route and consult on final Environmental Statement and Equality Impact Assessment

### 2022

Gain Royal Assent for the Phase 2b hybrid Bill

### 2023

Start of construction period of Phase 2b

### 2033

Start of train services on the Phase 2b route

# Keeping you informed

**We are committed to keeping you informed and making sure that if you are affected by the Government's plans, you understand what to expect (and when), and how we can help.**



## Community engagement

We have a local engagement team which covers your area. If you would like to speak to them, please contact us using the contact details provided here. We have published a Community Engagement Strategy, which sets out our approach to community engagement and what it means for those who either live or work within the communities along the line of the new railway. You can read it by visiting:

[www.gov.uk/government/publications/hs2-ltds-community-engagement-strategy](http://www.gov.uk/government/publications/hs2-ltds-community-engagement-strategy)

## Residents' Charter and Commissioner

The Residents' Charter is our promise to communicate as clearly as we possibly can with people who live along or near the HS2 route. You can read it by visiting:

[www.gov.uk/government/publications/hs2-residents-charter](http://www.gov.uk/government/publications/hs2-residents-charter)

We also have an independent Residents' Commissioner whose job is to make sure we keep to the promises we make in the Charter and to keep it under constant review. The Residents' Commissioner's reports are published at:

[www.gov.uk/government/collections/hs2-ltd-residents-commissioner](http://www.gov.uk/government/collections/hs2-ltd-residents-commissioner)

You can contact the Commissioner at:  
[residentscommissioner@hs2.org.uk](mailto:residentscommissioner@hs2.org.uk)

## Property and compensation

You can find our guide to property schemes by visiting:

[www.gov.uk/government/collections/hs2-property](http://www.gov.uk/government/collections/hs2-property)

You can also find out if you are eligible for compensation at:

[www.gov.uk/claim-compensation-if-affected-by-hs2](http://www.gov.uk/claim-compensation-if-affected-by-hs2)



## Contact us at HS2

If you have any questions about the information in this booklet, please get in touch. You can also contact us if you'd like a free copy of this booklet in: Large print | Braille | Audio | Easy Read or for help and information in a different language.

### Online

[www.hs2.org.uk](http://www.hs2.org.uk)

### Telephone

08081 434 434

### Minicom

08081 456 472

### Email

[hs2enquiries@hs2.org.uk](mailto:hs2enquiries@hs2.org.uk)

### Write to

High Speed Two (HS2)  
Limited, Two Snowhill,  
Snow Hill Queensway,  
Birmingham B4 6GA